



St Stephen's
CE Primary School

John 13:34 'Love one another, as I have loved you'

NEWSLETTER

35: Friday 19th June 2026

Learning, loving and growing; together as God's children

Super Mrs Smith

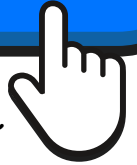
SATURDAY

Saturday 4th July 2026. 12pm - 2pm



BOOK NOW

Click above or
book via



Arbor

What's a colour run?

A colour run is a fun, non-competitive event where people walk, jog or run around a set route while being gently showered with bright, coloured powder at different points along the way. The focus is on fun, celebration and participation, rather than speed or winning. People usually start in light-coloured clothing (often white) so the colours show up, and by the end they are covered in a rainbow of colour!

We hope you can join us!



YOU
ARE
awESOME



SKIP2BFIT

We are so proud of these two amazing St Stephen's superstars! One has been selected to trial with Burnley FC Academy, while the other is proudly representing Manchester Giants Juniors Basketball Club at an international tournament in Barcelona. What incredible achievements!



We're excited to welcome Skip2bfit into school for a fun fitness day on Thursday 25th June! Children will take part in energetic skipping challenges using special counting ropes, all set to music, promoting health, resilience and a love of being active. It's a highly motivating day where every child is encouraged to beat their own personal best and enjoy being part of something active and fun. Children are encouraged to wear trainers or pumps on this day with their uniform.

STAY CONNECTED WITH US:

Phone: 0161 764 1132

Email: ststephens@thesycamoretrust.co.uk

Facebook: [St Stephen's CE Primary School, Bury.](#)

Website: www.ststephensceprimary.co.uk/



LOGIN

LOG INTO OUR
SCHOOL APPS:



Arbor
Parent Portal **95%**
usage



School Money

OUR ST.STEPHEN'S SUPERSTARS:

EYFS Melissa & Bahasht

YEAR 1 Amelia & Zayan

YEAR 2 Yusuf Ja & Emma

YEAR 3 Freddie & Aleena

YEAR 4 Amelia & Felix

YEAR 5 Charlie & Henry

YEAR 6 All of Year 6 for their swimming



OUR CHARACTER SUPERSTARS:

EYFS

KEY STAGE 1

KEY STAGE 2

Jayden Jace - YR

Jaxon-James - Y1

Fatima - Y6

THIS WEEK'S ATTENDANCE and PUNCTUALITY:

<u>NURSERY</u>	84%	1 late	<u>YEAR 3</u>	89.62%	1 late
<u>RECEPTION</u>	96.3%	1 late	<u>YEAR 4</u>	96.36%	0 lates
<u>YEAR 1</u>	94.17%	1 late	<u>YEAR 5</u>	96.9%	0 lates
<u>YEAR 2</u>	97.5%	1 late	<u>YEAR 6</u>	94.48%	1 late

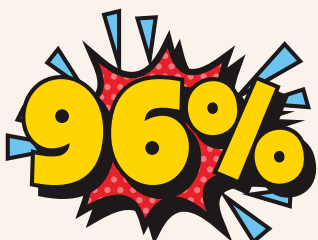
Number of lates this week: 6



Great improvement from 12 last week!

Punctuality Champions: Year 4 and Year 5

Attendance Heroes: YEAR 2



Appointments in term-time:

Appointments, where possible, should be booked in school holidays or after school. This includes routine dental and optician appointments.



Parent information, support and signposting

Keeping our children, and each other, safe is our number 1 priority at St Stephen's. Each week we will share key information we hope will be useful to our families.



[Link here to our school website for helpful information, links and downloads.](#)

If you ever have any questions, please do not hesitate to contact Mrs Denney (DSL), Mrs Garside or Mr Smith (DDSL)



St. Stephen's is an Emotionally Friendly Setting

Our EFS accreditation signifies that our school has implemented a whole-school approach to address emotional needs, including clear safeguarding and health and safety policies, demonstrating a strong focus on creating a safe and supportive learning environment for ALL. We are very proud to be the first primary in Bury to receive this!

FAMILY SUPPORT

Please see Padlet links below for further support:

[For children and young people](#)

[For parents and carers](#)

CLICK HERE

Emotional and Mental Wellbeing Support
FOR CHILDREN AND YOUNG PEOPLE
Thriving IN BURY

Bury's Essential Parent App
Expert Health and Parenting Advice Anytime, Anywhere

- ✓ 2000+ articles and videos
- ✓ Health information from pregnancy to teenage years for you and your family
- ✓ Available in over 75 languages
- ✓ Receive the latest local health and parenting advice

essential parent

NHS Bury Council
Scan QR code and download for free

Apple
Android

A free app tailored to Bury's local needs, including a range of local content, has been developed called the Essential Parent GM Family Hub.

The app offers expert health and parenting advice anywhere, anytime.

Please use the relevant QR code above to download the app to your mobile if you do not already have it - it is free and easy to use

The app includes:

- Over 2000 articles & videos
- Translates into over 75 languages
- Health information from pregnancy to teenage years for you and your family
- Receive the latest local health and parenting advice



The Local Offer helps SEND families access information about the services that are available to them.



We now use School Grid for pre-ordering school meals.

Please login and book your child's meals in advance. Without booking in advance, your child may not receive their first choice of meal.

If you do not have access, please speak to the school office.

WHAT'S ON THE MENU NEXT WEEK?

	MON	TUE	WED	THU	FRI
ORANGE	Beef Burger	Cheese & Tomato Pizza	Beef Lasagne	BBQ Chicken Panini	Vegetable Nuggets
BLUE	Halal Beef Burger	Cheese & Tomato Pizza	Halal Beef Lasagne	Halal BBQ Chicken Panini	Vegetable Nuggets
PURPLE	Vegetable Bolognese	Vegan Sausage Roll	Vegetable Moussaka	Cheese Whirl	Salmon & Sweet Potato Fishcake
GREEN	Choice of Jacket Potato	Choice of Jacket Potato	Choice of Jacket Potato	Choice of Jacket Potato	Choice of Jacket Potato
YELLOW	Choice of Sandwich	Choice of Sandwich	Choice of Sandwich	Choice of Sandwich	Choice of Sandwich
Accompaniments	Mini Corn Cobs Jacket Wedges	Steamed Mixed Vegetables Smokey Diced Potatoes	Fresh Carrots Fresh Broccoli Mashed Potatoes	Garden Peas Garlic Sliced Potatoes	Baked Beans Oven Chips
Desserts	Wibble Strawberry Jelly Yeo Organic Fruit Yoghurt Fresh Fruit Platter	Chocolate Orange Sponge & Custard Yeo Organic Fruit Yoghurt Fresh Fruit Platter	Strawberry Smoothie Pot Yeo Organic Fruit Yoghurt Fresh Fruit Platter	Blueberry Muffin Yeo Organic Fruit Yoghurt Fresh Fruit Platter	Organic Rainbow Fruity Ice Lolly Yeo Organic Fruit Yoghurt Fresh Fruit Platter



FAMILIES OF ST. STEPHEN'S CE PRIMARY SCHOOL

St Stephen's
CE Primary School



YOU'RE INVITED!

fundraising CAR BOOT SALE

Monday 13th July

Family Breakfast

Join us for a slice of toast
and a hot/cold drink.



8.15am

We can't wait to see you!



**EVENT
CANCELLED**

Due to low uptake

DUE TO LOW UPTAKE

SATURDAY 27TH JUNE 8-10AM

ST STEPHENS PRIMARY SCHOOL, COLVILLE DRIVE, BURY, BL8 2DX

PLEASE CONTACT SCHOOL TO BOOK CHILDREN

SAVE THE DATE

Super Mrs Smith Week

29th June - 4th July 2026



Super Mrs Smith

SATURDAY

Saturday 4th July 2026. 12pm - 2pm



YOU are in the spotlight:

Hallie

Year 5

Favourite food: Pasta

Favourite film/programme: Diary of a Wimpy Kid

Favourite subject: Art

What is the best thing about St Stephen's? The teachers

What would make St Stephen's better? Ice-cream Fridays!

What is your greatest achievement in school? Making the school football team

What is your greatest achievement out of school? Playing football for my team

you are
A·M·A·Z·I·N·G

If you need support with your wellbeing, speak to one of our Wellbeing Warriors, Mrs Cooney or Katie. YOU matter!



Wellbeing Club with Katie every:

MONDAY

12.30-1.00pm in HUB Connect

Joke of the week:

Q: Can a horse join the army?

A: No, the Neigh-vy.

Kindness
spotlight

CHOOSE kindness

Aleena

Year 5

Your kindness makes our school shine!

Wellbeing WISDOM from the warriors:

“
GIVE
Spend time with someone who might be lonely.”

WINNING WAYS TO WELLBEING



TALK & LISTEN, BE THERE, FEEL CONNECTED



Your time, your words, your presence



REMEMBER THE SIMPLE THINGS THAT GIVE YOU JOY



EMBRACE NEW EXPERIENCES, SEE OPPORTUNITIES, SURPRISE YOURSELF



DO WHAT YOU CAN, ENJOY WHAT YOU DO, MOVE YOUR MOOD

NHS 5 ways to wellbeing

INTRODUCE THESE FIVE SIMPLE STRATEGIES INTO YOUR LIFE AND YOU WILL FEEL THE BENEFITS.



Reflection of the week:

THE PERSON IN THE MIRROR

Unfailing love surrounds those who trust the LORD. Psalm 32:10

KID TIP

Remember: God loves you, and lots of people love you, too ... so it's only proper that you should admit that you're a very special person.

A PRAYER FOR TODAY

Dear Lord, today and every day, I will do my best to love everybody ... including myself. Amen.



St Stephen's
CE Primary School

John 13:34 'Love one another, as I have loved you'

Inclusion Champions

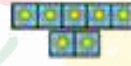


Our



sign

of the



week

is



Nice



Our Inclusion Champions are working on a sensory garden area to support children with their sensory needs .

Bury

Young People's
Mental Health
Support Team
Thrive in Education

Hello, my name is Katie



NHS

Pennine Care
NHS Foundation Trust

Who are Bury Mental Health Support Team (MHST)?

We are a service who works with Bury schools and colleges to support children and young people who struggle with their mental health.

Our goals are:

- To work with children, young people or parents on their own or in a group.
- To work with teachers to make school an emotionally friendly place for all.
- To give advice to school staff to help children and young people get the right support.



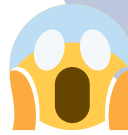
I'm an Education Mental Health Practitioner



How can I help?

I am trained to help children and young people, who may start to struggle with emotions such as;

Worry, sadness or fear



My allocated day with your school is:

MONDAY

From 3rd

November 2025

I work all year round so, i can support you during the school holidays.

How to ask for help?

If you are struggling with your emotions, please speak to;

- Your teacher
- Mrs Denney
- Mrs Cooney
- Parents/Carers
- Any trusted adult



What do I do?

- Work closely with school staff to help make school a happy and emotionally friendly place for everyone.
- Deliver workshops and teaching for school staff, pupils and parents.
- Offer advice about other services that are available within Bury so that you get the right support.



A bit about me:

Some fun facts about me:

- I really enjoy reading
- My favourite animal is a Lion
- I don't like spiders!



I look forward to working within your school and meeting you all.

Katie is in school every
MONDAY

In partnership with:

Early Break

Worry Management Webinar

For parents and carers of young people, this session will help you to:

- Better understand worry and anxiety
- Support your child to manage and overcome these feelings

Primary School

**Tuesday 16th
June
2026**

6-7.30pm

Step 1: To join our workshop please scan the QR code and complete the registration.

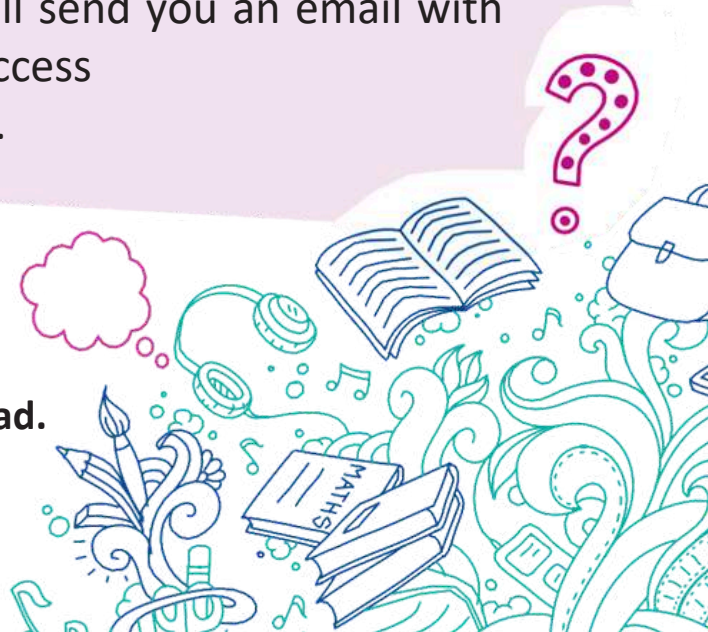


Step 2: Once registered a member of our team will send you an email with the link to access the webinar.

If you would like any further information
Please contact your school's mental health lead.



pcn-tr.burymhst@nhs.net



Worry Management Webinar

For parents and carers of young people, this session will help you to:

- Better understand worry and anxiety
- Support your child to manage and overcome these feelings

High School and
College
Tuesday 23rd June
2026
6-7.30pm

Step1: To join our workshop please scan the QR code and complete the registration.



Step2: Once registered a member of our team will send you an email with the link to access the webinar.

If you would like any further information
Please contact your school's mental health lead.



pcn-tr.burymhst@nhs.net





For the year's overview, please view school calendar

Event	Date
Celebration Worship	Friday 3pm
Y6 Swimming - everyday for 10 days	Monday 15th - Friday 26th June
Skip2bFit	Thursday 25th June
KS2 Sports Day - morning	Friday 26th June
Super Mrs Smith Week	Monday 29th June - Friday 3rd July
Super Mrs Smith Saturday - BOOK NOW	Saturday 4th July at 12:00pm
The Sycamore Trust Concert at Bury Parish Church	Tuesday 30th June - Parents welcome 1:15pm start
Year 6 Leavers Service @ Manchester Cathedral	Thursday 2nd July
EYFS and KS1 Sports Day - morning	Friday 3rd July
Trust Kwik Cricket Tournament (by invite only)	Monday 6th July
Excel Tennis Tournament (by invite only)	Tuesday 7th July (Y3/4 9:30am, Y5/6 1pm)
Welcome to Nursery September 2026 Tour of EYFS	Tuesday 7th July at 4:00pm
Welcome to Nursery September 2026 Stay & Play	Wednesday 8th July at 10:00am
St Stephen's Got Talent	Wednesday 8th July
Family Breakfast	Monday 13th July at 8:15am
End of Year Church Service	Friday 17th July at 10am
Year 6 Leavers Service	Friday 17th July at 1.15pm
School closes for Summer	Friday 17th July at 2:30pm

THIS WEEK



Picture News

Toy Story: Is technology changing childhood?

Filmmaker, Pixar, has shared that the new Toy Story 5 film will explore how children are spending more time using screens and digital technology.

TAKEHOME

15th - 21st June



Is technology changing childhood?



In the news this week

Filmmaker, Pixar, has shared that the new Toy Story 5 film will explore how children are spending more time using screens and digital technology. In the story, the toys worry that tablets, video games, and other devices are becoming more popular than traditional toys. The film has highlighted conversations about how childhood and play are changing.

Things to talk about at home ...

- What games or toys do you enjoy playing with most at home? Why?
- How much time do you believe people should spend using screens each day?
- What types of play help people use their imagination?
- Can digital technology and traditional toys both be important? In what way?

Please note any interesting thoughts or comments

Share your thoughts and read the opinions of others

www.picture-news.co.uk/discuss



© Picture News 2026

USE your VOICE

What do you think?

“Yes it’s changing childhood because rather than playing outside, children are now on ipads or using their phones.” - Aleena, Year 5