



St Stephen's
CE Primary School

John 13:34 'Love one another, as I have loved you'

NEWSLETTER

34: Friday 12th June 2026

Learning, loving and growing; together as God's children

WORLD CUP WEDNESDAY

COME ON ENGLAND!

ENGLAND'S FIRST WORLD CUP GAME!

CHILDREN ARE INVITED TO WEAR A FOOTBALL KIT OR ANYTHING SPORTY TO SCHOOL FOR A £1 DONATION

WEDNESDAY 17TH JUNE



Our Super Sixes

We are so proud of our children for the bravery, resilience and teamwork they have shown on residential this week, truly living out St Stephen's character values. Also, a huge thank you to our dedicated staff team for their round-the-clock care in making it such a special and memorable experience for the children.

We love St. Stephen's!

Super Mrs Smith Week

29th June - 4th July 2026

Super Mrs Smith

SATURDAY

Saturday 4th July 2026. 12pm - 2pm

The St Stephen's family are continuing to work hard as we prepare for a very special week of honour for our wonderful Mrs Smith. It promises to be a truly memorable week, filled with fun activities, special visitors, and even some challenges for families to enjoy at home. On the Saturday, we are delighted to be hosting our very first Colour Run in celebration of the teacher who always knew how to bring the fun — Mrs Smith.

More information will follow soon, including how to sign up for our super Saturday event... so watch this space!

STAY CONNECTED WITH US:

Phone: 0161 764 1132

Email: ststephens@thesycamoretrust.co.uk

Facebook: [St Stephen's CE Primary School, Bury.](#)

Website: www.ststephensceprimary.co.uk/



LOGIN

LOG INTO OUR SCHOOL APPS:



Arbor Parent Portal **95% usage**



School Money

OUR ST.STEPHEN'S SUPERSTARS:

EYFS Sidney & Abeera

YEAR 1 Whole Class

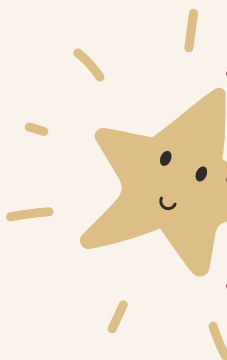
YEAR 2 Lucas

YEAR 3 Ivy & Katie

YEAR 4 Whole Class

YEAR 5 Kamran & Teddy

YEAR 6 Well done to all of Y6 for a brilliant week



OUR CHARACTER SUPERSTARS:

EYFS

KEY STAGE 1

KEY STAGE 2

Nataliyah - YR

Favour - Y1

Nathan - Y5

THIS WEEK'S ATTENDANCE and PUNCTUALITY:

<u>NURSERY</u>	85.51% 0 lates	<u>YEAR 3</u>	94.23% 1 late
<u>RECEPTION</u>	98.15% 4 lates	<u>YEAR 4</u>	98.18% 1 late
<u>YEAR 1</u>	98.33% 2 lates	<u>YEAR 5</u>	92.41% 1 late
<u>YEAR 2</u>	97.06% 3 lates	<u>YEAR 6</u>	93.10% 0 lates

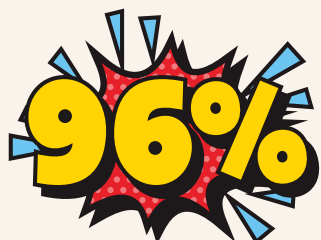
Number of lates this week: 12



No improvement from 25 last week

Punctuality Champions: Nursery and Year 6

Attendance Heroes: Year 1



Appointments in term-time:

Appointments, where possible, should be booked in school holidays or after school. This includes routine dental and optician appointments.



Parent information, support and signposting

Keeping our children, and each other, safe is our number 1 priority at St Stephen's. Each week we will share key information we hope will be useful to our families.



[Link here to our school website for helpful information, links and downloads.](#)

If you ever have any questions, please do not hesitate to contact Mrs Denney (DSL), Mrs Garside or Mr Smith (DDSL)



St. Stephen's is an Emotionally Friendly Setting

Our EFS accreditation signifies that our school has implemented a whole-school approach to address emotional needs, including clear safeguarding and health and safety policies, demonstrating a strong focus on creating a safe and supportive learning environment for ALL. We are very proud to be the first primary in Bury to receive this!

FAMILY SUPPORT

Please see Padlet links below for further support:

[For children and young people](#)

[For parents and carers](#)

CLICK HERE

Emotional and Mental Wellbeing Support

FOR CHILDREN AND YOUNG PEOPLE



Bury's Essential Parent App

Expert Health and Parenting Advice Anytime, Anywhere

- ✓ 2000+ articles and videos
- ✓ Health information from pregnancy to teenage years for you and your family
- ✓ Available in over 75 languages
- ✓ Receive the latest local health and parenting advice



Scan QR code and download for free



Apple



Android

A free app tailored to Bury's local needs, including a range of local content, has been developed called the Essential Parent GM Family Hub.

The app offers expert health and parenting advice anywhere, anytime.

Please use the relevant QR code above to download the app to your mobile if you do not already have it - it is free and easy to use

The app includes:

- Over 2000 articles & videos
- Translates into over 75 languages
- Health information from pregnancy to teenage years for you and your family
- Receive the latest local health and parenting advice



The Local Offer helps SEND families access information about the services that are available to them.



We now use School Grid for pre-ordering school meals.

Please login and book your child's meals in advance. Without booking in advance, your child may not receive their first choice of meal.

If you do not have access, please speak to the school office.

WHAT'S ON THE MENU NEXT WEEK?

	MON	TUE	WED	THU	FRI
ORANGE	Chicken Chow Mein	Cheese & Tomato Pizza	Cottage Pie	Macaroni Cheese	Southern Fried Chicken Goujons
BLUE	Halal Chicken Chow Mein	Cheese & Tomato Pizza	Halal Cottage Pie	Macaroni Cheese	Halal Southern Fried Chicken Goujons
PURPLE	Veggie Burrito	Quorn Tikka Curry, 50/50 Rice, Naan	Quorn Sausage Dinner With Gravy	Sweet & Sour Vegetables With Rice	Quorn Fishless Fingers
GREEN	Choice of Jacket Potato	Choice of Jacket Potato	Choice of Jacket Potato	Choice of Jacket Potato	Choice of Jacket Potato
YELLOW	Choice of Sandwich	Choice of Sandwich	Choice of Sandwich	Choice of Sandwich	Choice of Sandwich
Accompaniments	Mini Corn Cobs Jacket Wedges	Steamed Mixed Vegetables Smokey Diced Potatoes	Fresh Carrots Fresh Broccoli Mashed Potatoes	Garden Peas Garlic Sliced Potatoes	Baked Beans Oven Chips
Desserts	Wibble Strawberry Jelly Yeo Organic Fruit Yoghurt Fresh Fruit Platter	Summer Berry Crumble & Custard Yeo Organic Fruit Yoghurt Fresh Fruit Platter	Strawberry Smoothie Pot Yeo Organic Fruit Yoghurt Fresh Fruit Platter	Fruit Shortbread Biscuit Yeo Organic Fruit Yoghurt Fresh Fruit Platter	Organic Apple Fruity Ice Lolly Yeo Organic Fruit Yoghurt Fresh Fruit Platter



FAMILIES OF ST. STEPHEN'S CE PRIMARY SCHOOL

St Stephen's
CE Primary School



YOU'RE INVITED!

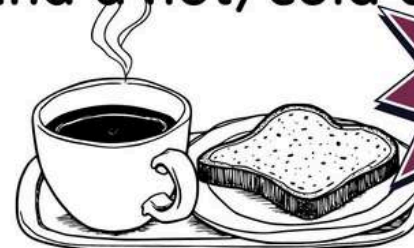
fundraising CAR BOOT SALE

Monday 13th July
Family
Breakfast

Join us for a slice of toast
and a hot/cold drink.

£10
PER CAR

£15
PER VAN



8.15am

£1
ENTRY
PER ADULT
CHILDREN
FREE

REDUCE
REUSE
RECYCLE

SATURDAY 27TH JUNE 8-10AM

We can't wait to see you!



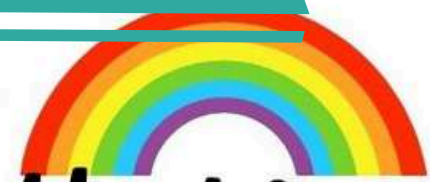
ST STEPHENS PRIMARY SCHOOL, COLVILLE DRIVE, BURY, BL8 2DX

PLEASE CONTACT SCHOOL TO BOOK YOUR PLACE

SAVE THE DATE



Super Mrs Smith Week



29th June - 4th July 2026



Super Mrs Smith

SATURDAY

Saturday 4th July 2026. 12pm - 2pm



We can't wait!



Friday 19th June 2026

The Y5 children will spend the day in our wonderful Forest school grounds learning through a variety of hands-on experiences:

🏕️ Pitching tents - a brilliant opportunity for teamwork, problem-solving and a true “Big Camp” experience!

🌿 Orienteering - navigating using maps and clues like real explorers

👏 Team building challenges - developing communication, trust and leadership

🔥 Campfire experiences - developing oracy skills, and outdoor cooking including toasting marshmallows!

🎨 Nature crafts and reflection - creating art from natural materials

🏠 Shelter building - working together to design and build their own shelters

We're really looking forward to it and know the children will have a brilliant time!



Look out for the letter on Arbor

Learning, loving and growing; together as God's children

YOU are in the spotlight:

Hani

Year 5

Favourite food: Noodles
Favourite film/programme: Descendents
Favourite subject: P.E
What is the best thing about St Stephen's? That it's safe
What would make St Stephen's better?
 More technical equipment
What is your greatest achievement in school? Getting a 'remarkable' comment on my work
What is your greatest achievement out of school? Playing football with my cousin

you are
 A·M·A·Z·I·N·G

If you need support with your wellbeing, speak to one of our Wellbeing Warriors, Mrs Cooney or Katie. YOU matter!



Wellbeing Club with Katie every:

MONDAY

12.30-1.00pm in HUB Connect

Joke of the week:

Which Egyptian pharaoh was also an astronaut?

Tutanka-moon!



Kindness

spotlight

CHOOSE kindness

Grace & Jacob

Year 6

Your kindness makes our school shine!

Wellbeing WISDOM from the warriors:

KEEP LEARNING

Learn a few words in another language

WINNING WAYS TO WELLBEING



TALK & LISTEN, BE THERE, FEEL CONNECTED



Your time, your words, your presence



REMEMBER THE SIMPLE THINGS THAT GIVE YOU JOY



EMBRACE NEW EXPERIENCES, SEE OPPORTUNITIES, SURPRISE YOURSELF



DO WHAT YOU CAN, ENJOY WHAT YOU DO, MOVE YOUR MOOD

INTRODUCE THESE FIVE SIMPLE STRATEGIES INTO YOUR LIFE AND YOU WILL FEEL THE BENEFITS.

NHS 5 ways to wellbeing



Reflection of the week:

PRAYING FOR PATIENCE

Do not worry about anything. But pray and ask God for everything you need.

KID TIP

Philippians 4:6

Pray early and often: One way to make sure that your heart is in tune with God is to pray often. The more you talk to God, the more He will talk to you.

A PRAYER FOR TODAY

Dear Lord, You are always near; let me talk with You often. When I am impatient, let me turn to You. And, let me use prayer to find the peace that You desire for my life today and every day. Amen.



St Stephen's
CE Primary School

Inclusion Champions



Our



sign

of the



week

is



Well done



Our Inclusion champions are working hard to make sure our school is accessible for everyone with or without disabilities!

Bury

Young People's
Mental Health
Support Team
Thrive in Education

Hello, my name is Katie



NHS

Pennine Care
NHS Foundation Trust

Who are Bury Mental Health Support Team (MHST)?

We are a service who works with Bury schools and colleges to support children and young people who struggle with their mental health.

Our goals are:

- To work with children, young people or parents on their own or in a group.
- To work with teachers to make school an emotionally friendly place for all.
- To give advice to school staff to help children and young people get the right support.



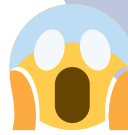
I'm an Education Mental Health Practitioner



How can I help?

I am trained to help children and young people, who may start to struggle with emotions such as;

Worry, sadness or fear



My allocated day with your school is:

MONDAY

From 3rd

November 2025

I work all year round so, I can support you during the school holidays.

How to ask for help?

If you are struggling with your emotions, please speak to;

- Your teacher
- Mrs Denney
- Mrs Cooney
- Parents/Carers
- Any trusted adult



What do I do?

- Work closely with school staff to help make school a happy and emotionally friendly place for everyone.
- Deliver workshops and teaching for school staff, pupils and parents.
- Offer advice about other services that are available within Bury so that you get the right support.



A bit about me:

Some fun facts about me:

- I really enjoy reading
- My favourite animal is a Lion
- I don't like spiders!



I look forward to working within your school and meeting you all.

Katie is in school every
MONDAY

In partnership with:

Early Break

Worry Management Webinar

For parents and carers of young people, this session will help you to:

- Better understand worry and anxiety
- Support your child to manage and overcome these feelings

Primary School

**Tuesday 16th
June
2026**

6-7.30pm

Step 1: To join our workshop please scan the QR code and complete the registration.

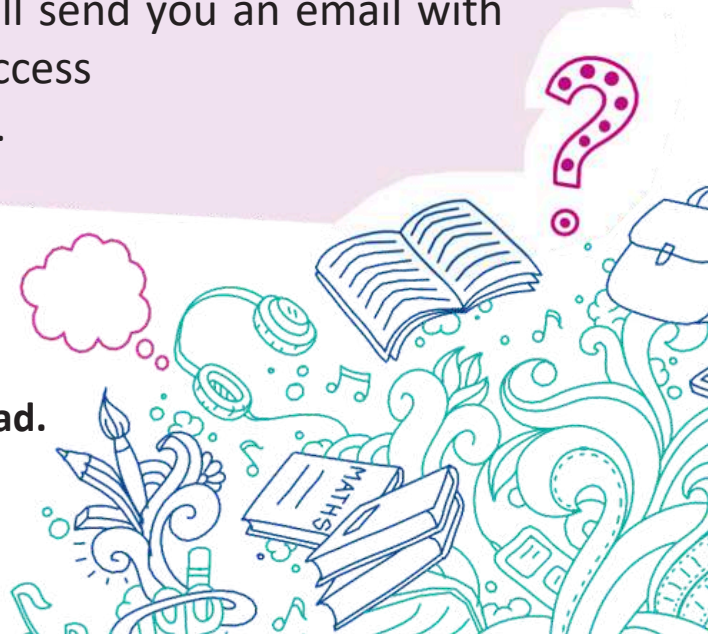


Step 2: Once registered a member of our team will send you an email with the link to access the webinar.

If you would like any further information
Please contact your school's mental health lead.



pcn-tr.burymhst@nhs.net



Worry Management Webinar

For parents and carers of young people, this session will help you to:

- Better understand worry and anxiety
- Support your child to manage and overcome these feelings

High School and
College
Tuesday 23rd June
2026
6-7.30pm

Step1: To join our workshop please scan the QR code and complete the registration.



Step2: Once registered a member of our team will send you an email with the link to access the webinar.

If you would like any further information
Please contact your school's mental health lead.



pcn-tr.burymhst@nhs.net





For the year's overview, please view school calendar

Event	Date
Celebration Worship	Friday 3pm
Y6 Swimming - everyday for 10 days	Monday 15th - Friday 26th June
Wear a football kit or something sporty - £1 donation	Wednesday 17th June
New Starters Parent Meetings	Monday 15th June at 3:45pm & 5:00pm
New Starters Parent Tours	Thursday 18th June at 9:30am & 10:30am
Y5 Big Camp Day	Friday 19th June
Skips2bFit	Thursday 25th June
KS2 Sports Day - morning	Friday 26th June
FOSS Car Boot Sale	Saturday 27th June at 9:00am
Super Mrs Smith Week	Monday 29th June - Friday 3rd July
Super Mrs Smith Saturday	Saturday 4th July at 12:00pm
The Sycamore Trust Concert at Bury Parish Church	Tuesday 30th June
Year 6 Leavers Service @ Manchester Cathedral	Thursday 2nd July
EYFS and KS1 Sports Day - morning	Friday 3rd July
Trust Kwik Cricket Tournament (by invite only)	Monday 6th July
Excel Tennis Tournament (by invite only)	Tuesday 7th July (Y3/4 9:30am, Y5/6 1pm)
Welcome to Nursery September 2026 Tour of EYFS	Tuesday 7th July at 4:00pm
Welcome to Nursery September 2026 Stay & Play	Wednesday 8th July at 10:00am
St Stephen's Got Talent	Wednesday 8th July



Oceans: How can we protect the oceans?

Inspired by seeing plastic pollution while diving as a teenager, Boyan Slat founded The Ocean Cleanup to remove rubbish from oceans and stop more plastic reaching rivers and seas.

TAKEHOME

8th - 14th June



How can we protect the oceans?



In the news this week

8th June is World Oceans Day, a time when people around the world think about how to care for seas, oceans and the creatures living in them. Dutch inventor, Boyan Slat, first became worried about ocean pollution as a teenager after seeing huge amounts of plastic while diving. He created the organisation The Ocean Cleanup, which designs special systems to remove rubbish from oceans and stop more plastic entering rivers and seas.

Things to talk about at home ...

- > Why do you think oceans are important to people and animals?
- > Have you ever seen pollution near a beach, river or park? How did it make you feel?
- > What small changes could families make to help protect the oceans?
- > Should countries work together more to protect the environment?

Please note any interesting thoughts or comments

Share your thoughts and read the opinions of others

www.picture-news.co.uk/discuss



© Picture News 2026

USE your VOICE

What do you think?

“We can protect the ocean by not throwing litter.” - Aaba, Year 6