



St Stephen's
CE Primary School

John 13:34 'Love one another, as I have loved you'

NEWSLETTER

32: Friday 22nd May 2026

Learning, loving and growing; together as God's children

you are

A·M·A·Z·I·N·G



WELCOME

Super proud of this group of Y3/4 SUPERstars. They took on a talented team from Lowercroft Primary School on Monday evening and showed real skill, teamwork and character from the first whistle to the final whistle. They kept their energy high throughout, and their attitude was **OUTSTANDING**. Well done, boys, we are SO proud of you!

A big St Stephen's welcome to Mrs Crouch, who is completing her teaching placement with us. She has settled wonderfully into Year 4 and is already enjoying getting to know the children and being part of school life. Mrs Crouch brings a wealth of experience from working in a specialist SEMH setting over many years, and we are delighted to have her expertise supporting our children and staff. We are equally delighted to support Mrs Crouch as she continues to grow and develop in her career.

“
Education is the most powerful weapon which you can use to change the world.”

NELSON MANDELA

A BIG well done and THANK YOU to our wonderful work experience students – Honey, Ruby and Wajiha – who brought such positivity, enthusiasm and kindness to our school this week. You joined fully in the fun, supported our children beautifully and were fantastic role models for learning and teamwork. We are so proud of you all and hope you have enjoyed the experience!

Thank You £466.37

We raised £466.37 on Break the Rules day! Thank you to all our families & super children for joining in the fun. Our children may have 'broken the rules' but they kept their usual high ST Stephen's standards!

STAY CONNECTED WITH US:

Phone: 0161 764 1132

Email: ststephens@thesycamoretrust.co.uk

Facebook: [St Stephen's CE Primary School, Bury.](#)

Website: www.ststephensceprimary.co.uk/



LOGIN

LOG INTO OUR
SCHOOL APPS:



Arbor
Parent Portal **94%** usage



School Money

OUR ST.STEPHEN'S SUPERSTARS:

EYFS Finn & Iylah-Rose

YEAR 1 Abdul & Jaxon-James

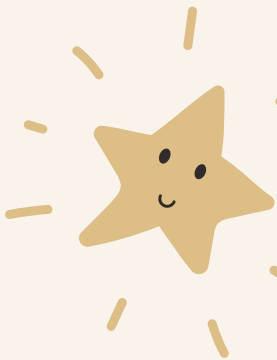
YEAR 2 Esme & Daniel

YEAR 3 George & Olivia

YEAR 4 Sonny & Lydia

YEAR 5 Charlie & Ibrahim

YEAR 6 Monty & Elliott



OUR CHARACTER SUPERSTARS:

EYFS	KEY STAGE 1	KEY STAGE 2
Tom - Nursery	Ayat - Y1	Oscar - Y6

THIS WEEK'S ATTENDANCE and PUNCTUALITY:

<u>NURSERY</u>	86.76%	2 lates	<u>YEAR 3</u>	96.92%	2 lates
<u>RECEPTION</u>	97.04%	2 lates	<u>YEAR 4</u>	95.45%	1 late
<u>YEAR 1</u>	97.50%	1 late	<u>YEAR 5</u>	94.14%	3 lates
<u>YEAR 2</u>	95.29%	1 late	<u>YEAR 6</u>	91.38%	0 lates

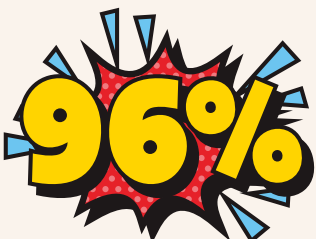
Number of lates this week: 12



No improvement from 10 last week!

Punctuality Champions: Year 6

Attendance Heroes: YEAR 1



Appointments in term-time:

Appointments, where possible, should be booked in school holidays or after school. This includes routine dental and optician appointments.

Parent information, support and signposting

Keeping our children, and each other, safe is our number 1 priority at St Stephen's. Each week we will share key information we hope will be useful to our families.



[Link here to our school website for helpful information, links and downloads.](#)

If you ever have any questions, please do not hesitate to contact Mrs Denney (DSL), Mrs Garside or Mr Smith (DDSL)

St. Stephen's is an Emotionally Friendly Setting



Our EFS accreditation signifies that our school has implemented a whole-school approach to address emotional needs, including clear safeguarding and health and safety policies, demonstrating a strong focus on creating a safe and supportive learning environment for ALL. We are very proud to be the first primary in Bury to receive this!

FAMILY SUPPORT

Please see Padlet links below for further support:

[For children and young people](#)

[For parents and carers](#)

CLICK HERE

Emotional and Mental Wellbeing Support

FOR CHILDREN AND YOUNG PEOPLE



What Parents & Educators Need to Know about MINECRAFT

WHAT ARE THE RISKS?

- PUBLIC SERVER COMMUNICATION:** Public servers allow children to communicate with strangers online, which can lead to cyberbullying, grooming, and other risks.
- GRIEFING BEHAVIOUR:** Children can be targeted by other players who intentionally cause them distress or frustration in the game.
- ADDICTIVE GAMEPLAY LOOPS:** Minecraft's open-ended nature and rewards can lead to excessive gaming, impacting schoolwork and sleep.
- SCARY GAME ELEMENTS:** Some players use mods or plugins to create scary or violent environments, which can be frightening for younger children.
- IN-GAME SPENDING:** Children can be encouraged to spend real money on in-game items, skins, or virtual currencies.
- ONLINE INTERACTIONS:** Children can be exposed to inappropriate language, sexual content, or grooming attempts.

Advice for Parents & Educators

- CHOOSE SUITABLE GAME MODES:** Opt for single-player or private servers with trusted friends.
- DISCUSS ONLINE STRANGERS:** Educate children on the dangers of interacting with unknown people online.
- USE PRIVATE SERVERS:** If playing multiplayer, use private servers where you can control who joins.
- SET SPENDING BOUNDARIES:** Establish clear rules on how much money can be spent on in-game purchases.

Meet Our Expert: [Photo of expert] [Name]

#WakeUpWednesday The National College

www.nationalcollege.org.uk

Minecraft continues to be a highly popular platform for children, combining creativity, problem-solving and social interaction.

While the game can offer positive opportunities for learning and play, features such as public servers, multiplayer modes and in-game communication can create safeguarding challenges.

This latest guide supports educators and parents in understanding these risks and helping children play more safely. Access the guide:

[: CLICK HERE](#)



The Local Offer helps SEND families access information about the services that are available to them.



We now use School Grid for pre-ordering school meals.

Please login and book your child's meals in advance. Without booking in advance, your child may not receive their first choice of meal.

Parents can book their meal on School Grid up to 8:55am each morning.

WHAT'S ON THE MENU AFTER HALF-TERM?

	MON	TUE	WED	THU	FRI
ORANGE	Beef Burger	Cheese & Tomato Pizza	Beef Lasagne	BBQ Chicken Panini	Vegetable Nuggets
BLUE	Halal Beef Burger	Cheese & Tomato Pizza	Halal Beef Lasagne	Halal BBQ Chicken Panini	Vegetable Nuggets
PURPLE	Vegetable Bolognese	Vegan Sausage Roll	Vegetable Moussaka	Cheese Whirl	Salmon & Sweet Potato Fishcake
GREEN	Jacket Potato Choices	Jacket Potato Choices	Jacket Potato Choices	Jacket Potato Choices	Jacket Potato Choices
YELLOW	Choice of Sandwich	Choice of Sandwich	Choice of Sandwich	Choice of Sandwich	Choice of Sandwich
Accompaniments	Mini Corn Cobs Jacket Wedges	Steamed Mixed Vegetables Smokey Diced Potatoes	Fresh Carrots Fresh Broccoli Mashed Potatoes	Garden Peas Garlic Sliced Potatoes	Baked Beans Oven Chips
Desserts	Wibble Strawberry Jelly Yeo Organic Fruit Yoghurt Fresh Fruit Platter	Chocolate Orange Sponge & Custard Yeo Organic Fruit Yoghurt Fresh Fruit Platter	Strawberry Smoothie Pot Yeo Organic Fruit Yoghurt Fresh Fruit Platter	Blueberry Muffin Yeo Organic Fruit Yoghurt Fresh Fruit Platter	Organic Rainbow Fruity Ice Lolly Yeo Organic Fruit Yoghurt Fresh Fruit Platter



THE YEAR OF READING AT ST. STEPHEN'S

PROUD TO SUPPORT THE NATIONAL YEAR OF READING

GO ALL IN.

Great Books Guide
for age 11+
CLICK HERE



CHECK OUT



BURY LIBRARIES SERVICE

Download the FREE BorrowBox app today!



Skip the queues and dive into our Spotlight Titles on BorrowBox. Enjoy unlimited, FREE access to best-selling books - no waiting required.

There's a book for everyone, and it's all completely free.

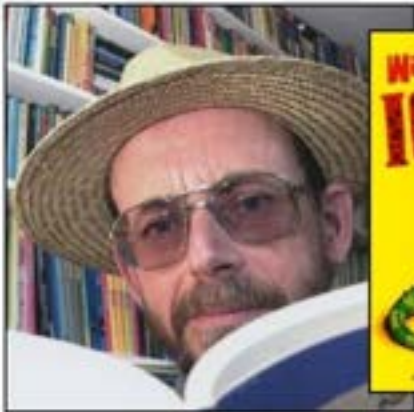
AUTHOR WORDS OF THE WEEK

Another wonderful author, who needs no introduction, Brian Moses!

@moses_brian and @vocabularyninja

Brian Moses

Brian Moses (born 1950) is an English poet. He mainly writes for children, has over 200 published works and is well known as a children's poet. His poetry books and anthologies for Macmillan have sold in excess of 1 million copies. Brian was asked by CBBC to write a poem for the Queen's 80th birthday.



unicorn - a mythical creature with a spiral horn.

stars - a fixed point in the night sky, light.



@VocabularyNinja

'Words unlock the doors to a world of understanding...'



JOIN
US

FAMILIES OF ST. STEPHEN'S CE PRIMARY SCHOOL

fundraising

CAR BOOT SALE

£10
PER CAR

£15
PER VAN



£1
ENTRY
PER ADULT
CHILDREN
FREE

REDUCE
REUSE
RECYCLE

SATURDAY 27TH JUNE 8-10AM

ST STEPHENS PRIMARY SCHOOL, COLVILLE DRIVE, BURY, BL8 2DX

PLEASE CONTACT SCHOOL TO BOOK: 0161 764 1132



BURY
GRAMMAR SCHOOL

For pupils starting Senior School in September 2027

Senior School Experience Day

For Year 5 Pupils

Tuesday 2nd June 2026



For more information or to reserve your place,
please scan the QR code



www.burygrammar.com |   

If your child is planning to attend, you
MUST inform the school office for the
register.



We can't wait!



Friday 19th June 2026

The Y5 children will spend the day in our wonderful Forest school grounds learning through a variety of hands-on experiences:

🏕️ Pitching tents - a brilliant opportunity for teamwork, problem-solving and a true “Big Camp” experience!

🌿 Orienteering - navigating using maps and clues like real explorers

👉 Team building challenges - developing communication, trust and leadership

🔥 Campfire experiences - developing oracy skills, and outdoor cooking including toasting marshmallows!

🎨 Nature crafts and reflection - creating art from natural materials

🏠 Shelter building - working together to design and build their own shelters

We're really looking forward to it and know the children will have a brilliant time!



Look out for the letter on Arbor

Learning, loving and growing; together as God's children

YOU are in the spotlight:

Amelia Year 1

Favourite food: Honey on cereal
Favourite film/programme: Paw Patrol
Favourite subject: Phonics, Art and Science
What is the best thing about St Stephen's? Everyone is kind to one another
What would make St Stephen's better? Having chocolate at school
What is your greatest achievement in school? Doing 'good learning'
What is your greatest achievement out of school? Getting a certificate at swimming
Anything else? My favourite colours are pink and purple

you are A·M·A·Z·I·N·G

If you need support with your wellbeing, speak to one of our Wellbeing Warriors, Mrs Cooney or Katie. YOU matter!



Wellbeing Club with Katie every:
MONDAY
 12.30-1.00pm in HUB Connect

Joke of the week:
HA HA

What's leather and sounds like a sneeze?

A shoe!

Kindness spotlight

CHOOSE kindness

Myra Year 6

Your kindness makes our school shine!

Wellbeing WISDOM from the warriors:

“
TAKE NOTICE
 Smell flowers, herbs or spices and describe them
 ”

WINNING WAYS TO WELLBEING

- CONNECT**
TALK & LISTEN, BE THERE, FEEL CONNECTED
- Give**
Your time, your words, your presence
- TAKE NOTICE**
REMEMBER THE SIMPLE THINGS THAT GIVE YOU JOY
- KEEP LEARNING**
EMBRACE NEW EXPERIENCES, SEE OPPORTUNITIES, SURPRISE YOURSELF
- BE ACTIVE**
DO WHAT YOU CAN, ENJOY WHAT YOU DO, MOVE YOUR MOOD

INTRODUCE THESE FIVE SIMPLE STRATEGIES INTO YOUR LIFE AND YOU WILL FEEL THE BENEFITS.

[NHS 5 ways to wellbeing](#)



Reflection of the week:

NEED HELP? ASK GOD!

Continue to ask, and God will give to you.
 Continue to search and you will find.
 Continue to knock, and the door will open for you. *Matthew 7:7*

KID TIP

Got questions? Ask God! If you have a question, pray about it. Whatever your question, God has the answer, but it's up to you to ask.

A PRAYER FOR TODAY

Lord, today I will ask You for the things I need. In every situation, I will come to You in prayer. You know what I want, Lord, and more importantly, You know what I need. Yet even though I know that you know, I still won't be too timid - or too busy - to ask. Amen.



St Stephen's
CE Primary School

John 13:34 'Love one another, as I have loved you'

Inclusion Champions



Our



sign

of the



week

is



Love



Our Inclusion champions are working hard to make sure our school is accessible for everyone with or without disabilities!

Bury

Young People's
Mental Health
Support Team
Thrive in Education

Hello, my name is Katie



NHS

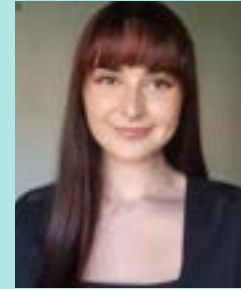
Pennine Care
NHS Foundation Trust

Who are Bury Mental Health Support Team (MHST)?

We are a service who works with Bury schools and colleges to support children and young people who struggle with their mental health.

Our goals are:

- To work with children, young people or parents on their own or in a group.
- To work with teachers to make school an emotionally friendly place for all.
- To give advice to school staff to help children and young people get the right support.



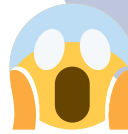
I'm an Education Mental Health Practitioner



How can I help?

I am trained to help children and young people, who may start to struggle with emotions such as;

Worry, sadness or fear



My allocated day with your school is:

MONDAY

From 3rd

November 2025

I work all year round so, i can support you during the school holidays.

How to ask for help?

If you are struggling with your emotions, please speak to;

- Your teacher
- Mrs Denney
- Mrs Cooney
- Parents/Carers
- Any trusted adult



What do I do?

- Work closely with school staff to help make school a happy and emotionally friendly place for everyone.
- Deliver workshops and teaching for school staff, pupils and parents.
- Offer advice about other services that are available within Bury so that you get the right support.



A bit about me:

Some fun facts about me:

- I really enjoy reading
- My favourite animal is a Lion
- I don't like spiders!



I look forward to working within your school and meeting you all.

Katie is in school every
MONDAY

In partnership with:

Early Break



For the year's overview, please view school calendar

Event	Date
Celebration Worship	Friday 3pm
May half-term	Monday 25 May - Friday 29th May
Y6 Bikeability	Monday 1st - Friday 5th June
Class Photographs	Monday 8th June
Y6 Residential	Wednesday 10th - Friday 12th June
Y6 Swimming - everyday for 10 days	Monday 15th - Friday 26th June
New Starters Parent Meetings	Monday 15th June at 3:45pm & 5:00pm
New Starters Parent Tours	Thursday 18th June at 9:30am & 10:30am
Y5 Big Camp Day	Friday 19th June
Skips2bFit	Thursday 25th June
KS2 Sports Day - morning	Friday 26th June
FOSS Car Boot Sale	Saturday 27th June at 9:00am
Super Mrs Smith Week	Monday 29th June - Friday 3rd July
Super Mrs Smith Saturday	Saturday 4th July at 12:00pm
The Sycamore Trust Concert at Bury Parish Church	Tuesday 30th June
Year 6 Leavers Service @ Manchester Cathedral	Thursday 2nd July
EYFS and KS1 Sports Day - morning	Friday 3rd July
St Stephen's Got Talent	Wednesday 8th July
Family Breakfast & Parent Workshop	Monday 13th July at 8:15am

Concerned about your child's speech and language? There's a brilliant online tool that parents can use at home to get personalised ideas to support their child's communication. It's super simple to use and gives you fun and practical everyday strategies you can do together — perfect if your little one is finding certain sounds tricky, struggling to put words together, or just needs a little extra support. Easy, reassuring, and parent-friendly.

A great first step if you're looking for guidance at home.



Free Speech & Language Support for Families

♥ What is it?

A simple, friendly WhatsApp programme that helps you support your child's early communication – no waiting, no appointments.

You'll get short videos, ideas and practical tips for everyday life – all designed by a Specialist Speech and Language Therapist



Who is it for?

- Parents of children who aren't yet talking or are not having conversations
- Families on waiting list for or considering speech and language therapy
- Anyone who wants to feel clearer and more confident about what to do next



What will you get?

- 10 easy steps delivered by WhatsApp
- Videos, audios, and quick activities
- Support for connection, confidence and communication
- Trusted by over 7,000 families worldwide

How to start

Scan the QR Code to Join instantly



(This is not a group chat – it's private support sent directly to you.)