



St Stephen's
CE Primary School

John 13:34 'Love one another, as I have loved you'

NEWSLETTER

31: Friday 15th May 2026

Learning, loving and growing; together as God's children



YOU'RE INVITED!

Monday 18th May

Family Breakfast

Join us for a slice of toast and a hot/cold drink.



8.15am

We can't wait to see you!

St Stephen's SUPER Sixes

Our Super Sixes have completed their SATs and we couldn't be prouder of them. Their hard work, resilience and teamwork have shone through all week.



Now for the joys of their final term in primary school: residential, swimming, bikeability, Y6 production, transition plus so much more.

so proud of You



STAY CONNECTED WITH US:

Phone: 0161 764 1132

Email: ststephens@thesycamoretrust.co.uk

Facebook: [St Stephen's CE Primary School, Bury.](#)

Website: www.ststephensceprimary.co.uk/



LOGIN

LOG INTO OUR

SCHOOL APPS:



Arbor Parent Portal **94%** usage



School Money

HELP

Team Ethos are looking for:

- Tree stumps
- Wooden pallets or wooden crates

to build another amazing bug hotel!

If you can help, please let us know!

OUR ST.STEPHEN'S SUPERSTARS:

EYFS Rayah-Jai, Bodhi & Annabella

YEAR 1 Hussain & Bam Bam

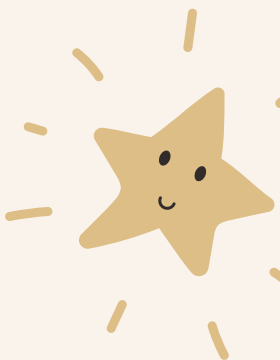
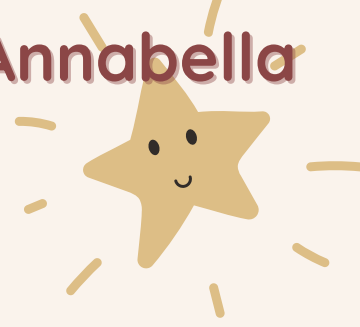
YEAR 2 Oliver

YEAR 3 Ava & Myla

YEAR 4 Ali & Muhammad

YEAR 5 Henry & Aizah

YEAR 6 Whole class



OUR CHARACTER SUPERSTARS:

EYFS	KEY STAGE 1	KEY STAGE 2
Clara - R	Wasi - Y2	Aleena - Y3

THIS WEEK'S ATTENDANCE and PUNCTUALITY:

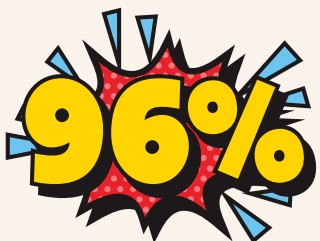
<u>NURSERY</u>	85.29%	0 lates	<u>YEAR 3</u>	97.69%	1 late
<u>RECEPTION</u>	97.04%	3 lates	<u>YEAR 4</u>	96.7%	1 late
<u>YEAR 1</u>	98.33%	4 lates	<u>YEAR 5</u>	98.28%	0 lates
<u>YEAR 2</u>	100%	1 late	<u>YEAR 6</u>	100%	0 lates

Number of lates this week: 10

No improvement from 3 last week!

Punctuality Champions: Nursery, Year 6 & Year 6

Attendance Heroes: Year 2 & Year 6



Appointments in term-time:

Appointments, where possible, should be booked in school holidays or after school. This includes routine dental and optician appointments.

Parent information, support and signposting

Keeping our children, and each other, safe is our number 1 priority at St Stephen's. Each week we will share key information we hope will be useful to our families.



[Link here to our school website for helpful information, links and downloads.](#)

If you ever have any questions, please do not hesitate to contact Mrs Denney (DSL), Mrs Garside or Mr Smith (DDSL)

St. Stephen's is an Emotionally Friendly Setting



Our EFS accreditation signifies that our school has implemented a whole-school approach to address emotional needs, including clear safeguarding and health and safety policies, demonstrating a strong focus on creating a safe and supportive learning environment for ALL. We are very proud to be the first primary in Bury to receive this!

FAMILY SUPPORT

Please see Padlet links below for further support:

[For children and young people](#)

[For parents and carers](#)

CLICK HERE

Emotional and Mental Wellbeing Support

FOR CHILDREN AND YOUNG PEOPLE



What Parents & Educators Need to Know about ONLINE GROOMING

Online grooming is when someone builds a relationship with a child or young person online to gain their trust for the purposes of sexual abuse, exploitation, radicalisation, or criminal activity – such as identity theft or financial scams. According to the NSPCC, police in the UK recorded over 1,000 offences involving sexual communication with a child in a single year – an increase of 89% since 2017/18.

WHAT ARE THE RISKS?

- STRANGERS USING FAKE IDENTITIES**
- EXPLOITATION THROUGH GIFTS AND FLATTERY**
- GROUP CHATS AS HIDDEN PATHWAYS**
- THE RISE OF SEXTORTION**
- GAMING PLATFORMS AS GROOMING GATEWAYS**
- CRIMINAL & RADICALISATION RISKS**

Advice for Parents & Educators

- KEEP CONVERSATIONS REGULAR**
- CREATE A "TELL ME" CULTURE**
- UNDERSTAND THE PLATFORMS CHILDREN USE**
- STAY ALERT TO WARNING SIGNS**

Meet Our Expert: #WakeUpWednesday, The National College

Follow us: @wake_up_weds, www.thenationalcollege, @wakeupwednesday, @wakeupweds

Online grooming is a serious and growing threat, with offenders using a range of tactics to build trust with children and young people before exploiting that relationship.

This can happen across social media, gaming platforms, messaging apps and group chats, often through fake identities, flattery, gifts or pressure. This guide highlights key risks, including:

- Strangers using fake identities
- Exploitation through gifts and flattery
- Group chats creating hidden pathways
- Gaming platforms becoming grooming gateways

Download the guide here: [CLICK HERE](#)



The Local Offer helps SEND families access information about the services that are available to them.





REGISTER NOW

CHECK YOUR EMAIL

Today you should receive an email from School Grid with details to login.

From Monday 1st June, **ALL** meals need to be chosen through School Grid and this will be the new way for parent's to make payments for school meals.

WHAT'S ON THE MENU NEXT WEEK?

SCHOOL MENU

	MON	TUE	WED	THU	FRI
ORANGE	Chicken Chow Mein	Cheese & Tomato Pizza	Cottage Pie	Macaroni Cheese	Southern Fried Chicken Goujons
BLUE	Halal Chicken Chow Mein	Cheese & Tomato Pizza	Halal Cottage Pie	Macaroni Cheese	Halal Southern Fried Chicken Goujons
PURPLE	Veggie Burrito	Quorn Tikka Curry, 50/50 Rice, Naan	Quorn Sausage Dinner With Gravy	Sweet & Sour Vegetables With Rice	Quorn Fishless Fingers
GREEN	Cheese Jacket Potato	Bean Jacket Potato	Cheese Jacket Potato	Tuna Jacket Potato	Cheese Jacket Potato
YELLOW	Tuna Sandwich	Cheese Sandwich	Egg Sandwich	Cheese Sandwich	Ham Sandwich
Accompaniments	Mini Corn Cobs Jacket Wedges	Steamed Mixed Vegetables Smoky Diced Potatoes	Fresh Carrots Fresh Broccoli Mashed Potatoes	Garden Peas Garlic Sliced Potatoes	Baked Beans Oven Chips
Desserts	Wibble Strawberry Jelly Yeo Organic Fruit Yoghurt Fresh Fruit Platter	Summer Berry Crumble & Custard Yeo Organic Fruit Yoghurt Fresh Fruit Platter	Strawberry Smoothie Pot Yeo Organic Fruit Yoghurt Fresh Fruit Platter	Fruit Shortbread Biscuit Yeo Organic Fruit Yoghurt Fresh Fruit Platter	Organic Apple Fruity Ice Lolly Yeo Organic Fruit Yoghurt Fresh Fruit Platter



THE YEAR OF READING AT ST. STEPHEN'S

PROUD TO SUPPORT THE NATIONAL YEAR OF READING

GO ALL IN.

Great Books Guide
for age 11+
CLICK HERE



CHECK OUT



BURY LIBRARIES SERVICE

Download the FREE BorrowBox app today!



WEEK DAYS (ALL LOCATIONS)
Tuesday 10AM - 4.30PM
Wednesday 10AM - 4.30PM
Thursday 12.30PM - 7PM
Friday 10AM - 4.30PM

WEEKENDS
Saturday 9.30AM - 1PM
(BURY, BADCLIFFE & BAMSBOXTON)
SUNDAY 9.30AM - 1PM
(FREETWICH)
VISIT US ONLINE AT
WWW.BURY.GOV.UK / LIBRARIES

BorrowBox

Spotlight Titles

Skip the queue and enjoy unlimited access to our favourite bestselling authors exclusively on BorrowBox.

Skip the queues and dive into our Spotlight Titles on BorrowBox.
Enjoy unlimited, FREE access to best-selling books - no waiting required.

There's a book for everyone, and it's all completely free.

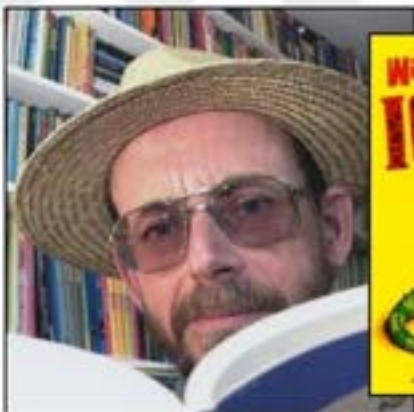
AUTHOR WORDS OF THE WEEK

Another wonderful author, who needs no introduction, Brian Moses!

@moses_brian and @vocabularyninja

Brian Moses

Brian Moses (born 1950) is an English poet. He mainly writes for children, has over 200 published works and is well known as a children's poet. His poetry books and anthologies for Macmillan have sold in excess of 1 million copies. Brian was asked by CBBC to write a poem for the Queen's 80th birthday.



unicorn - a mythical creature with a spiral horn.

stars - a fixed point in the night sky, light.



@VocabularyNinja

'Words unlock the doors to a world of understanding...'



JOIN
US

FAMILIES OF ST. STEPHEN'S CE PRIMARY SCHOOL

fundraising

CAR BOOT SALE

£10
PER CAR

£15
PER VAN



£1
ENTRY
PER ADULT
CHILDREN
FREE

REDUCE
REUSE
RECYCLE

SATURDAY 27TH JUNE 8-10AM

ST STEPHENS PRIMARY SCHOOL, COLVILLE DRIVE, BURY, BL8 2DX

PLEASE CONTACT SCHOOL TO BOOK: 0161 764 1132

BURY COMMUNITY EDUCATIONAL PSYCHOLOGY SERVICE (CEPS)



Book a 30 minute slot with a Trainee
Community Educational Psychologist.
Get practical advice on:

1. Supporting children with special educational needs and disabilities.
2. Guidance around child development.
3. Strategies to improve learning and engagement in education.

Discussions available in English or Urdu.
With three members of our CEPS team:
Lauren Smith, Rafia Safdar & Romessa Lak.



TUES, 26TH MAY

13:00 - 16:00

Teams



TUES, 9TH JUNE

9:30 - 12:00

Radcliffe Hall CE

Please fill in an expression of interest form: [EOI form](#)



The registration cut-off is Friday the 15th May.
Discussions are available in English or Urdu.

We are excited to present to you

Starting 21st April 2026



This service is for parent/carers who would like support and advice around their neurodiverse needs. Your young person does not have to have a diagnosis to access this service.

Drop-in sessions are every

Tuesday & Thursday

9.30am – 3pm

You can drop in or bookable appointments are available on request if you prefer.

Tel :0161 762 1440

Email: jburns@buryneurohub.co.uk

Address: Phoenix House, 100 Brierley Street, Bury BL9 9HN

The Bury Neuro Hub Offer



Parent/Carers attend a Hub Drop In or Contact the Hub
 Invitation to Neuro Hub Appointment offered.

- 👤 In person at the Hub
- 👤 Online
- 👤 Phone calls
- 👤 At school or college

Timely appointment given to discuss and to assess need and match with the correct support at the right time

Needs are Triage - Signposted to support immediately.

★ Triage as **Green = Getting Advice**

★ Triage as **Amber = Getting Help**

★ Triage as **Red = Getting More Help or Risk Support**

Families will all have access to the Getting advice stage whilst waiting for interventions. Families may also move through the quadrants where required.

Getting Advice

Signpost to relevant seminars held monthly (examples) Autism and Anxiety – CAMHS * Sensory Processing – Rehabilitation for Independence * Emotional Dysregulation and Building Resilience – CAMHS * The Proud Trust * SENDIASS
 Coffee Meetings- Offering a safe environment for families to meet and have a chat with others in the same situation. (Examples)

- Thinking Families
- Post Diagnostic
- Financial support

Information and Resources

- First Point Website / Social Media / Burys Local Offer
- Advice on SEND and reasonable adjustments
- Social opportunities - local groups/ sessions for all members of the family.
- Local and National support groups for parents accessing universal services.
- Padlet's on various topics

Thriving in Bury for Children and Young People, Parents and Carers, Education, Professionals, Sensory Padlet, Neurodiversity Padlet Autism and ADHD

- "Can Do Approach" Speech and Language WhatsApp group
- Signpost parents / carers and professionals to the Bury Multi-agency Sensory Processing Needs Toolkit on the local offer

Peer to Peer Support

- Parent/carers and young people accessing support from peers when needed.

Getting Help

- Navigator 1-1 support for 4-6 weeks support
- Access to IBASIS and SACS-r age 12 to 24 months
- Access to PACT age 2–10-year-old
- Paediatric Autism Communication Therapy an evidence-based intervention that works through video feedback techniques
- Access to Post Diagnostic Courses ADHD and Autism
- Financial Support with DLA, PIP and Charity Forms
- Onward referral Where needed referrals into services will be actioned to gain the correct support for the family's level of need

Getting More Help

Thinking Families- This is a 6-week course – The group intervention aims to support carers to understand their child's relational and attachment needs, in order to develop different strategies and ideas for supporting their children in a way that increases their sense of security and well-being and improve their behaviour. delivered by Bury CAMHS, in partnership with First Point

Riding the Rapids 10 week training course

Courses will be running in separate age groups

- ✓ Early Years
- ✓ Primary age children
- ✓ Secondary age children

Available to parent/carers of children/young people with a diagnosis of Autism, are on the waiting list for a diagnosis. It is also for parent/ carers of children/ young people with significant learning/ intellectual disabilities.

Getting Risk Support

This person will be there for emotional support for the families in line with Care Plan approach, attending and supporting at meetings where necessary.

As required collaborative support (systemic practice)



BURY
GRAMMAR SCHOOL

For pupils starting Senior School in September 2027

Senior School Experience Day

For Year 5 Pupils

Tuesday 2nd June 2026



For more information or to reserve your place,
please scan the QR code



www.burygrammar.com |   

If your child is planning to attend, you
MUST inform the school office for the
register.



YOU are in the spotlight:

Donald Year 4

- Favourite food:** Burger & fries
- Favourite film/programme:** Dinosaur King
- Favourite subject:** Science
- What is the best thing about St Stephen's?** My friends
- What would make St Stephen's better?** Making more new friends
- What is your greatest achievement in school?** Reaching 'Rock Legend' on my first day on TTRS

you are
A.M.A.Z.I.N.G

If you need support with your wellbeing, speak to one of our Wellbeing Warriors, Mrs Cooney or Katie. YOU matter!



Wellbeing Club with Katie every:

MONDAY

12.30-1.00pm in HUB Connect

Joke of the week:



Q: What do alien artists paint?

A: Mars-terpieces!

Kindness

spotlight

CHOOSE kindness

Noah, Kyle & Max Year 6

Your kindness makes our school shine!

Wellbeing WISDOM from the warriors:

BE ACTIVE
Do some gardening or outdoor chores

WINNING WAYS TO WELLBEING



TALK & LISTEN, BE THERE, FEEL CONNECTED



Your time, your words, your presence



REMEMBER THE SIMPLE THINGS THAT GIVE YOU JOY



EMBRACE NEW EXPERIENCES, SEE OPPORTUNITIES, SURPRISE YOURSELF



DO WHAT YOU CAN, ENJOY WHAT YOU DO, MOVE YOUR MOOD

INTRODUCE THESE FIVE SIMPLE STRATEGIES INTO YOUR LIFE AND YOU WILL FEEL THE BENEFITS.

[NHS 5 ways to wellbeing](#)



Reflection of the week:

SMILING IS GOOD

Jacob said, "For what a relief it is to see your friendly smile. It is like seeing the smile of God!" Genesis 33:10

KID TIP

Smile as much as you can. It's good for your health, and it makes those around you feel better.

A PRAYER FOR TODAY

Dear Lord, put a smile on my face, and let me share that smile with my friends and family. Amen.



St Stephen's
CE Primary School

Inclusion Champions



Our



sign

of the



week

is



Sorry



Our Inclusion champions are working hard to make sure our school is accessible for everyone with or without disabilities!

Bury

Young People's
Mental Health
Support Team
Thrive in Education

Hello, my name is Katie



NHS

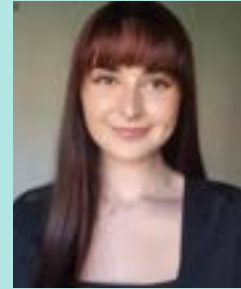
Pennine Care
NHS Foundation Trust

Who are Bury Mental Health Support Team (MHST)?

We are a service who works with Bury schools and colleges to support children and young people who struggle with their mental health.

Our goals are:

- To work with children, young people or parents on their own or in a group.
- To work with teachers to make school an emotionally friendly place for all.
- To give advice to school staff to help children and young people get the right support.



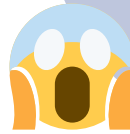
I'm an Education Mental Health Practitioner



How can I help?

I am trained to help children and young people, who may start to struggle with emotions such as;

Worry, sadness or fear



My allocated day with your school is:

MONDAY

From 3rd

November 2025

I work all year round so, i can support you during the school holidays.

How to ask for help?

If you are struggling with your emotions, please speak to;

- Your teacher
- Mrs Denney
- Mrs Cooney
- Parents/Carers
- Any trusted adult



What do I do?

- Work closely with school staff to help make school a happy and emotionally friendly place for everyone.
- Deliver workshops and teaching for school staff, pupils and parents.
- Offer advice about other services that are available within Bury so that you get the right support.



A bit about me:

Some fun facts about me:

- I really enjoy reading
- My favourite animal is a Lion
- I don't like spiders!



I look forward to working within your school and meeting you all.

Katie is in school every
MONDAY

In partnership with:

& Early Break



For the year's overview, please view school calendar

Event	Date
Celebration Worship	Friday 3pm
Family Breakfast	Monday 18th May at 8:15am
'No Pens Day' - £1 suggested donation	Wednesday 20th May
May half-term	Monday 25 May - Friday 29th May
Y6 Bikeability	Monday 1st - Friday 5th June
Class Photographs	Monday 8th June
Y6 Residential	Wednesday 10th - Friday 12th June
Y6 Swimming - everyday for 10 days	Monday 15th - Friday 26th June
New Starters Parent Meetings	Monday 15th June at 3:45pm & 5:00pm
New Starters Parent Tours	Thursday 18 June at 9:30am & 10:30am
Skips2bFit	Thursday 25th June
KS2 Sports Day - morning	Friday 26th June
FOSS Car Boot Sale	Saturday 27th June at 9:00am
Super Mrs Smith Week	Monday 29th June - Friday 3rd July
Super Mrs Smith Saturday	Saturday 4 July at 12:00pm
The Sycamore Trust Concert at Bury Parish Church	Tuesday 30th June
Year 6 Leavers Service @ Manchester Cathedral	Thursday 2nd July
EYFS and KS1 Sports Day - morning	Friday 3rd July
St Stephen's Got Talent	Wednesday 8th July

NO PENS DAY



WEDNESDAY

Speech and
Language UK 
Changing young lives.

20TH MAY

What is No Pens Day?

No Pens Day is a national initiative organised by Speech and Language UK. For one day, children put their pens and pencils away and focus on activities that develop speaking, listening and communication skills.

WHY IS THIS IMPORTANT?

Speech and language skills are essential for:

- learning in school
- building friendships
- expressing ideas and feelings
- understanding others

Across the UK, around 1.9 million children struggle with speech, language and communication. No Pens Day helps raise awareness and supports the development of these vital skills.



WHAT WILL HAPPEN IN SCHOOL?

Throughout the day, children will take part in activities such as:

- discussions and debates
- storytelling and drama
- problem-solving challenges
- speaking and listening games
- collaborative group work

These activities help build confidence, vocabulary and communication skills.

I CAN

No Pens Day
Wednesday

SUPPORTING THE CHARITY

We are also raising money for Speech and Language UK to help support children with speech, language and communication needs. Suggested donation: £1 per child. If you would like to donate, please visit our fundraising page:

<https://speechandlanguage.donorsupport.co/-/NLEQCSSZ?member=SATSDHUB>

Every donation helps more children get the support they need to find their voice.



THANK YOU FOR SUPPORTING NO PENS DAY AT ST STEPHEN'S!

Concerned about your child's speech and language? There's a brilliant online tool that parents can use at home to get personalised ideas to support their child's communication. It's super simple to use and gives you fun and practical everyday strategies you can do together — perfect if your little one is finding certain sounds tricky, struggling to put words together, or just needs a little extra support. Easy, reassuring, and parent-friendly.

A great first step if you're looking for guidance at home.



Free Speech & Language Support for Families

♥ What is it?

A simple, friendly WhatsApp programme that helps you support your child's early communication – no waiting, no appointments.

You'll get short videos, ideas and practical tips for everyday life – all designed by a Specialist Speech and Language Therapist



Who is it for?

- Parents of children who aren't yet talking or are not having conversations
- Families on waiting list for or considering speech and language therapy
- Anyone who wants to feel clearer and more confident about what to do next



What will you get?

- 10 easy steps delivered by WhatsApp
- Videos, audios, and quick activities
- Support for connection, confidence and communication
- Trusted by over 7,000 families worldwide

How to start

Scan the QR Code to Join instantly



(This is not a group chat – it's private support sent directly to you.)



St Stephen's
CE Primary School

John 13:34 'Love one another, as I have loved you'

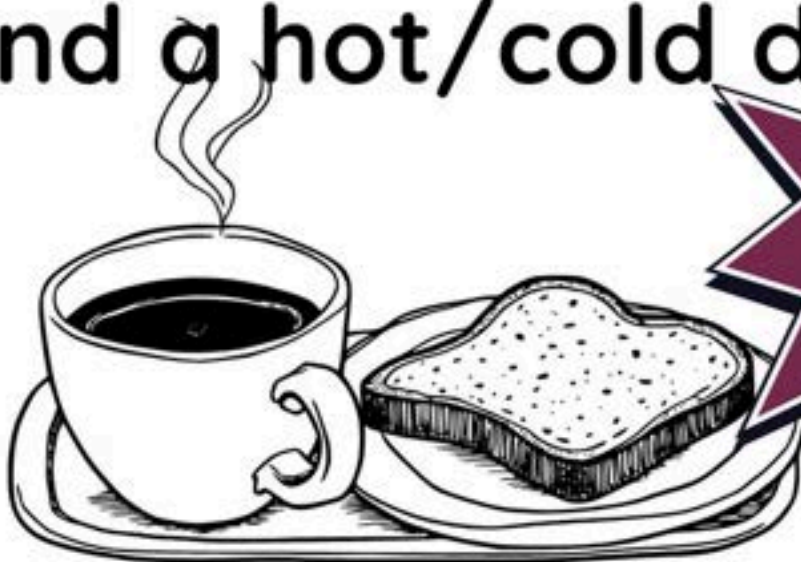


YOU'RE INVITED!

Monday 18th May

Family Breakfast

Join us for a slice of toast
and a hot/cold drink.



8.15am

We can't wait to see you!

