



St Stephen's
CE Primary School

John 13:34 'Love one another, as I have loved you'

NEWSLETTER

30: Friday 8th May 2026

Learning, loving and growing; together as God's children

St Stephen's SUPER Sixes



A BIG welcome to our new pupils joining us in Reception, Y2, Y3 and Y4. We are so excited to have you join our St Stephen's family!

Next week at St Stephen's, here you'll stand,
Pens at the ready, hearts well planned.
You've worked so hard, you've learned so much,
Supported always by a caring touch.
You've tackled fractions, inference too,
Explained your thinking, seen things through.



you GOT THIS!

You've practised calmly, tried again,
Showing resilience now and then.
But remember this as tests begin:
SATs don't score what you keep within.
They can't measure what you're capable of,
Your determination, strength or love.
They don't score kindness given out,
Or courage when you feel some doubt.
They don't capture faith, respect or care,
Or how you look out for others there.
They don't see effort, growth or grit,
Or moments when you refused to quit.
They don't show leadership, fairness or voice,



★ ★ ★

Or the wisdom in the choices you make.
So take your time and do your best,
One page, one question, one small step.
Trust what you know — you are prepared,
Because at St Stephen's, learning's shared.

You are AWESOME!



And when the week has come and gone,
Please carry this truth moving on:
You are worth more than any score —
And capable of so much more.
Whatever the results, this will stay true:
WE ARE ALL SO PROUD OF YOU.



STAY CONNECTED WITH US:

Phone: 0161 764 1132
Email: ststephens@thesycamoretrust.co.uk
Facebook: [St Stephen's CE Primary School, Bury.](#)
Website: www.ststephensceprimary.co.uk/



LOGIN

LOG INTO OUR SCHOOL APPS:



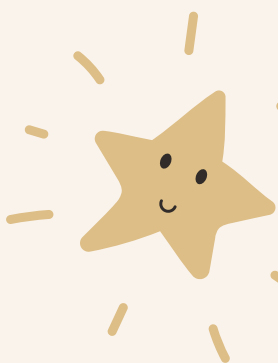
Arbor Parent Portal **94%** usage



School Money

OUR ST.STEPHEN'S SUPERSTARS:

EYFS Clara & Tanaka
YEAR 1 Ivy & Ugochi
YEAR 2 Karter-John & Mia
YEAR 3 Phoebe & Eesa
YEAR 4 Paige & Donald
YEAR 5 Teddy & Aleena
YEAR 6 Lacey-Mai & Yaseen



OUR CHARACTER SUPERSTARS:

EYFS	KEY STAGE 1	KEY STAGE 2
Melissa - YR	Yusuf Ju - Y2	Jacob - Y6

THIS WEEK'S ATTENDANCE and PUNCTUALITY:

<u>NURSERY</u>	94.74% 0 lates	<u>YEAR 3</u>	98.72% 1 late
<u>RECEPTION</u>	91.36% 1 late	<u>YEAR 4</u>	95.24% 0 lates
<u>YEAR 1</u>	90.28% 0 lates	<u>YEAR 5</u>	96.55% 0 lates
<u>YEAR 2</u>	100% 1 late	<u>YEAR 6</u>	97.13% 0 lates

Number of lates this week: 3



Punctuality Champions: Nursery, Y1, Y4, Y5 & Y6

Attendance Heroes: Year 2



96%

Appointments in term-time:

Appointments, where possible, should be booked in school holidays or after school. This includes routine dental and optician appointments.

Parent information, support and signposting

Keeping our children, and each other, safe is our number 1 priority at St Stephen's. Each week we will share key information we hope will be useful to our families.



[Link here to our school website for helpful information, links and downloads.](#)

If you ever have any questions, please do not hesitate to contact Mrs Denney (DSL), Mrs Garside or Mr Smith (DDSL)

St. Stephen's is an Emotionally Friendly Setting



Our EFS accreditation signifies that our school has implemented a whole-school approach to address emotional needs, including clear safeguarding and health and safety policies, demonstrating a strong focus on creating a safe and supportive learning environment for ALL. We are very proud to be the first primary in Bury to receive this!

FAMILY SUPPORT

Please see Padlet links below for further support:

[For children and young people](#)

[For parents and carers](#)

CLICK HERE

Emotional and Mental Wellbeing Support

FOR CHILDREN AND YOUNG PEOPLE



10 Top Tips for Parents and Educators HELPING NEURODIVERGENT CHILDREN NAVIGATE THE ONLINE WORLD

Neurodivergent people tend to be early adopters of technology, and many influential innovators in this space are neurodivergent themselves. It's therefore likely that a neurodivergent child or young person may be drawn to the online world from an early age. This isn't a concern in itself, but understanding both the benefits and potential risks to their health and wellbeing, there are key considerations to help keep safe and positive online experiences for neurodivergent children.

- TREAT ONLINE LIKE THE REAL WORLD**
Remember a child's online world is not a safe haven. It's a place where they can be exposed to cyberbullying, sexual abuse, grooming, and other risks. Treat online interactions with the same level of caution as you would in the real world.
- MODEL RESPONSIBLE USE**
Children learn from what they see. Show them how to use technology responsibly and respectfully. Encourage them to be kind and considerate in their online interactions.
- KNOW YOUR LIMITS**
Set clear boundaries for screen time. Encourage them to take regular breaks and engage in offline activities. Be consistent with these boundaries.
- CONSIDER AGES AND STAGES**
Age-appropriate content is key. Encourage them to use age-appropriate apps and websites. Discuss the risks of sharing personal information online.
- KEEP CONVERSATIONS OPEN**
Encourage them to talk to you about their online experiences. Let them know you're there to support them if they need it.
- BUILD YOUR KNOWLEDGE**
Stay up to date on the latest online trends and risks. Educate yourself on digital safety and privacy settings.
- SET CLEAR BOUNDARIES**
Establish clear rules for online behavior. Discuss the importance of not sharing personal information and being respectful to others.
- UNDERSTAND AI CONTENT**
Help them understand the risks of AI-generated content. Discuss how AI can be used to create realistic-looking images and text.
- EXPLAIN AI LIMITATIONS**
Explain that AI is not human and can make mistakes. Encourage them to be critical of AI-generated content.
- CLARIFY AI RELATIONSHIPS**
Discuss the ethical implications of AI. Encourage them to think about the impact of AI on society and the environment.

Meet Our Expert: **WakeUpWednesday** and **The National College**

Neurodivergent children are often early adopters of technology, making supported online experiences especially important.

This latest [#WakeUpWednesday](#) guide helps parents and educators understand how to create safe, positive digital environments. It explores key considerations, including:

- Modelling responsible online behaviour
- Setting age-appropriate boundaries
- Encouraging open and supportive conversations
- Understanding emerging risks such as AI-generated content

The guide also highlights the importance of balancing screen time with offline activities to support wellbeing and development.

Download the guide here:

[CLICK HERE](#)



The Local Offer helps SEND families access information about the services that are available to them.





School Grid is our online system for ordering school lunches. It lets parents and carers choose their child's meal in advance using a phone, tablet or computer.

How will it help at lunchtime?

Your child gets the meal they've chosen: Meals are pre-selected, so children feel confident and know what they're having.

Less waiting, calmer lunchtimes: Choices are already made, which helps queues move faster and gives children more time to eat and play.

Supports healthy choices: Parents can see the menu in advance and help children choose balanced meals.

Helpful for allergies and dietary needs: Dietary requirements are safely managed as staff know exactly what each child needs.

Less food waste: The kitchen prepares the correct number of meals, helping reduce waste.

Easy to use: You and your child can order meals at a time that suits you and see what's coming up on the menu.

WHAT'S ON THE MENU NEXT WEEK?

SCHOOL MENU

	MON	TUE	WED	THU	FRI
ORANGE	Chicken Tikka Curry, 50/50 Rice, Naan	Cheese & Tomato Pizza	Pork Sausage Dinner With Gravy	Spaghetti Bolognese	Breaded Fish Fingers
BLUE	Halal Chicken Tikka Curry, 50/50 Rice, Naan	Cheese & Tomato Pizza	Halal Chicken Sausage Dinner With Gravy	Halal Spaghetti Bolognese	Breaded Fish Fingers
PURPLE	Cheese & Tomato Pasta Bake	Free Range Egg Omelette	Quorn Fillet Dinner With Gravy	Cheesy Frittata	Vegetable Nuggets
GREEN	Tuna Jacket Potato	Bean Jacket Potato	Cheese Jacket Potato	Tuna Jacket Potato	Cheese Jacket Potato
YELLOW	Cheese Sandwich	Egg Sandwich	Ham Sandwich	Cheese Sandwich	Tuna Sandwich
Accompaniments	Mini Corn Cobs Jacket Wedges	Steamed Mixed Vegetables Smoky Diced Potatoes	Fresh Carrots Fresh Broccoli Mashed Potatoes	Garden Peas Garlic Sliced Potatoes	Baked Beans Oven Chips
Desserts	Wibble Strawberry Jelly Yeo Organic Fruit Yoghurt Fresh Fruit Platter	Apple Sponge & Custard Yeo Organic Fruit Yoghurt Fresh Fruit Platter	Strawberry Smoothie Pot Yeo Organic Fruit Yoghurt Fresh Fruit Platter	Banana Flapjack Yeo Organic Fruit Yoghurt Fresh Fruit Platter	Organic Rainbow Fruity Ice Lolly Yeo Organic Fruit Yoghurt Fresh Fruit Platter



JOIN
US

FAMILIES OF ST. STEPHEN'S CE PRIMARY SCHOOL

fundraising

CAR BOOT SALE

£10
PER CAR

£15
PER VAN



£1
ENTRY
PER ADULT
CHILDREN
FREE

REDUCE
REUSE
RECYCLE

SATURDAY 27TH JUNE 8-10AM

ST STEPHENS PRIMARY SCHOOL, COLVILLE DRIVE, BURY, BL8 2DX

PLEASE CONTACT SCHOOL TO BOOK: 0161 764 1132

BURY COMMUNITY EDUCATIONAL PSYCHOLOGY SERVICE (CEPS)



Book a 30 minute slot with a Trainee
Community Educational Psychologist.
Get practical advice on:

1. Supporting children with special educational needs and disabilities.
2. Guidance around child development.
3. Strategies to improve learning and engagement in education.

Discussions available in English or Urdu.
With three members of our CEPS team:
Lauren Smith, Rafia Safdar & Romessa Lak.



TUES, 26TH MAY

13:00 - 16:00

Teams



TUES, 9TH JUNE

9:30 - 12:00

Radcliffe Hall CE

Please fill in an expression of interest form: [EOI form](#)



The registration cut-off is Friday the 15th May.
Discussions are available in English or Urdu.

We are excited to present to you

Starting 21st April 2026



This service is for parent/carers who would like support and advice around their neurodiverse needs. Your young person does not have to have a diagnosis to access this service.

Drop-in sessions are every

Tuesday & Thursday

9.30am – 3pm

You can drop in or bookable appointments are available on request if you prefer.

Tel :0161 762 1440

Email: jburns@buryneurohub.co.uk

Address: Phoenix House, 100 Brierley Street, Bury BL9 9HN

The Bury Neuro Hub Offer



Parent/Carers attend a Hub Drop In or Contact the Hub
 Invitation to Neuro Hub Appointment offered.

- 👤 In person at the Hub
- 👤 Online
- 📞 Phone calls
- 👤 At school or college

Timely appointment given to discuss and to assess need and match with the correct support at the right time

Needs are Triage - Signposted to support immediately.

★ Triage as **Green = Getting Advice**

★ Triage as **Amber = Getting Help**

★ Triage as **Red = Getting More Help or Risk Support**

Families will all have access to the Getting advice stage whilst waiting for interventions. Families may also move through the quadrants where required.

Getting Advice

Signpost to relevant seminars held monthly (examples) Autism and Anxiety – CAMHS * Sensory Processing – Rehabilitation for Independence * Emotional Dysregulation and Building Resilience – CAMHS * The Proud Trust * SENDIASS
 Coffee Meetings- Offering a safe environment for families to meet and have a chat with others in the same situation. (Examples)

- Thinking Families
- Post Diagnostic
- Financial support

Information and Resources

- First Point Website / Social Media / Bury's Local Offer
- Advice on SEND and reasonable adjustments
- Social opportunities - local groups/ sessions for all members of the family.
- Local and National support groups for parents accessing universal services.
- Padlet's on various topics

Thriving in Bury for Children and Young People, Parents and Carers, Education, Professionals, Sensory Padlet, Neurodiversity Padlet Autism and ADHD

- "Can Do Approach" Speech and Language WhatsApp group
- Signpost parents / carers and professionals to the Bury Multi-agency Sensory Processing Needs Toolkit on the local offer

Peer to Peer Support

- Parent/carers and young people accessing support from peers when needed.

Getting Help

- Navigator 1-1 support for 4-6 weeks support
- Access to IBASIS and SACS-r age 12 to 24 months
- Access to PACT age 2–10-year-old
- Paediatric Autism Communication Therapy an evidence-based intervention that works through video feedback techniques
- Access to Post Diagnostic Courses ADHD and Autism
- Financial Support with DLA, PIP and Charity Forms
- Onward referral Where needed referrals into services will be actioned to gain the correct support for the family's level of need

Getting More Help

Thinking Families- This is a 6-week course – The group intervention aims to support carers to understand their child's relational and attachment needs, in order to develop different strategies and ideas for supporting their children in a way that increases their sense of security and well-being and improve their behaviour. delivered by Bury CAMHS, in partnership with First Point

Riding the Rapids 10 week training course

Courses will be running in separate age groups

- ✓ Early Years
- ✓ Primary age children
- ✓ Secondary age children

Available to parent/carers of children/young people with a diagnosis of Autism, are on the waiting list for a diagnosis. It is also for parent/ carers of children/ young people with significant learning/ intellectual disabilities.

Getting Risk Support

This person will be there for emotional support for the families in line with Care Plan approach, attending and supporting at meetings where necessary.

As required collaborative support (systemic practice)

YOU are in the spotlight:

Bodhi

Reception

Favourite food: Fish fingers

Favourite film/programme: Bluey

Favourite subject: Maths

What is the best thing about St Stephen's? Dancing outside with my friends at playtime

What would make St Stephen's better?

More certificates

What is your greatest achievement in school? Getting a full sticker sheet

What is your greatest achievement out of school? Swimming certificates

Anything else? I love playing with Finn at school

you are
A·M·A·Z·I·N·G

If you need support with your wellbeing, speak to one of our Wellbeing Warriors, Mrs Cooney or Katie. YOU matter!



Wellbeing Club with Katie every:

MONDAY

12.30-1.00pm in HUB Connect

Joke of the week:

What do you call two matching penguins?

Pengtwins!



Kindness

spotlight

CHOOSE kindness

Freddie

Year 3

Your kindness makes our school shine!

Wellbeing WISDOM from the warriors:

“
CONNECT
Chat with a neighbour or wave hello
”

WINNING WAYS TO WELLBEING



TALK & LISTEN, BE THERE, FEEL CONNECTED



Your time, your words, your presence



REMEMBER THE SIMPLE THINGS THAT GIVE YOU JOY



EMBRACE NEW EXPERIENCES, SEE OPPORTUNITIES, SURPRISE YOURSELF



DO WHAT YOU CAN, ENJOY WHAT YOU DO, MOVE YOUR MOOD

INTRODUCE THESE FIVE SIMPLE STRATEGIES INTO YOUR LIFE AND YOU WILL FEEL THE BENEFITS.

NHS 5 ways to wellbeing.



Reflection of the week:

THE GIFT OF CONTENTMENT

I've learned by now to be quite content whatever my circumstances. I'm just as happy with little as with much, with much as with little. I've found the recipe for being happy whether full or hungry, hands full or hands empty.
Philippians 4:11

KID TIP

If you want to be contented ... you should obey the rules you find in God's Word, you should obey your parents, and you should learn to trust that quiet voice that tells you right from wrong (that voice is called your conscience, and you should listen to it).

A PRAYER FOR TODAY

Dear Lord, when I welcome Jesus into my heart, and when I obey Your commandments, I will be contented. Help me to trust Your Word and follow Your Son always. Amen.



St Stephen's
CE Primary School

John 13:34 'Love one another, as I have loved you'

Inclusion Champions



Our



sign

of the



week

is



GOOD



MORNING

Good morning



Our Inclusion champions are working hard to make sure our school is accessible for everyone with or without disabilities!

Bury

Young People's
Mental Health
Support Team
Thrive in Education

Hello, my name is Katie



NHS

Pennine Care
NHS Foundation Trust

Who are Bury Mental Health Support Team (MHST)?

We are a service who works with Bury schools and colleges to support children and young people who struggle with their mental health.

Our goals are:

- To work with children, young people or parents on their own or in a group.
- To work with teachers to make school an emotionally friendly place for all.
- To give advice to school staff to help children and young people get the right support.

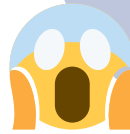


I'm an Education Mental Health Practitioner

How can I help?

I am trained to help children and young people, who may start to struggle with emotions such as;

Worry, sadness or fear



My allocated day with your school is:

MONDAY

From 3rd

November 2025

I work all year round so, i can support you during the school holidays.

How to ask for help?

If you are struggling with your emotions, please speak to;

- Your teacher
- Mrs Denney
- Mrs Cooney
- Parents/Carers
- Any trusted adult



What do I do?

- Work closely with school staff to help make school a happy and emotionally friendly place for everyone.
- Deliver workshops and teaching for school staff, pupils and parents.
- Offer advice about other services that are available within Bury so that you get the right support.



A bit about me:

Some fun facts about me:

- I really enjoy reading
- My favourite animal is a Lion
- I don't like spiders!



I look forward to working within your school and meeting you all.

Katie is in school every
MONDAY

In partnership with:

Early Break



For the year's overview, please view school calendar

Event	Date
Celebration Worship	Friday 3pm
Y6 KS2 SATs	Monday 11th - Thursday 14th May
Break the Rules Day	Friday 15th May
Family Breakfast & Parent Workshop	Monday 18th May at 8:15am
'No Pens Day' - £1 suggested donation	Wednesday 20th May
May half-term	Monday 25 May - Friday 29th May
Y6 Bikeability	Monday 1st - Friday 5th June
Class Photographs	Monday 8th June
Y6 Residential	Wednesday 10th - Friday 12th June
Y6 Swimming - everyday for 10 days	Monday 15th - Friday 26th June
New Starters Parent Meetings	Monday 15th June at 3:45pm & 5:00pm
New Starters Parent Tours	Thursday 18 June at 9:30am & 10:30am
Skips2bFit	Thursday 25th June
KS2 Sports Day - morning	Friday 26th June
FOSS Car Boot Sale	Saturday 27th June at 9:00am
Super Mrs Smith Week	Monday 29th June - Friday 3rd July
Super Mrs Smith Saturday	Saturday 4 July at 12:00pm
The Sycamore Trust Concert at Bury Parish Church	Tuesday 30th June
Year 6 Leavers Service @ Manchester Cathedral	Thursday 2nd July

THIS WEEK



Picture News

Sir David at 100: Why do some people become so important to the world?

Sir David Attenborough, a famous naturalist and broadcaster, is celebrating his 100th birthday.

TAKEHOME



Why do some people become so important to the world?



In the news this week

Sir David Attenborough, a famous naturalist and broadcaster, is celebrating his 100th birthday. For over 70 years, he has created and presented programmes that help people understand animals, nature, and the planet. His work has inspired millions of people to learn more about the world and take care of it. Many people are celebrating his life and the difference he has made.

Things to talk about at home ...

- > Who is someone you think is important? Why are they important?
- > What has David Attenborough done to help people understand the world?
- > How can we learn about places and animals we can't see ourselves?
- > Do you think you have to be famous to make a difference? Why?
- > Can you share something you care about and would like others to care about too?

Please note any interesting thoughts or comments

Share your **USE your VOICE** and the opinions of others

www.picture-news.co.uk/discuss



© Picture News 2026

What do you think?

“Because of the knowledge they have.” - Elliott, Year 6

NO PENS DAY



WEDNESDAY

Speech and
Language UK 
Changing young lives.

20TH MAY

What is No Pens Day?

No Pens Day is a national initiative organised by Speech and Language UK. For one day, children put their pens and pencils away and focus on activities that develop speaking, listening and communication skills.

WHY IS THIS IMPORTANT?

Speech and language skills are essential for:

- learning in school
- building friendships
- expressing ideas and feelings
- understanding others

Across the UK, around 1.9 million children struggle with speech, language and communication. No Pens Day helps raise awareness and supports the development of these vital skills.



WHAT WILL HAPPEN IN SCHOOL?

Throughout the day, children will take part in activities such as:

- discussions and debates
- storytelling and drama
- problem-solving challenges
- speaking and listening games
- collaborative group work

These activities help build confidence, vocabulary and communication skills.

I CAN

No Pens Day
Wednesday

SUPPORTING THE CHARITY

We are also raising money for Speech and Language UK to help support children with speech, language and communication needs. Suggested donation: £1 per child. If you would like to donate, please visit our fundraising page:

<https://speechandlanguage.donorsupport.co/-/NLEQCSSZ?member=SATSDHUB>

Every donation helps more children get the support they need to find their voice.



THANK YOU FOR SUPPORTING NO PENS DAY AT ST STEPHEN'S!

Concerned about your child's speech and language? There's a brilliant online tool that parents can use at home to get personalised ideas to support their child's communication. It's super simple to use and gives you fun and practical everyday strategies you can do together — perfect if your little one is finding certain sounds tricky, struggling to put words together, or just needs a little extra support. Easy, reassuring, and parent-friendly.

A great first step if you're looking for guidance at home.



Free Speech & Language Support for Families

♥ What is it?

A simple, friendly WhatsApp programme that helps you support your child's early communication – no waiting, no appointments.

You'll get short videos, ideas and practical tips for everyday life – all designed by a Specialist Speech and Language Therapist



Who is it for?

- Parents of children who aren't yet talking or are not having conversations
- Families on waiting list for or considering speech and language therapy
- Anyone who wants to feel clearer and more confident about what to do next



What will you get?

- 10 easy steps delivered by WhatsApp
- Videos, audios, and quick activities
- Support for connection, confidence and communication
- Trusted by over 7,000 families worldwide

How to start

Scan the QR Code to Join instantly



(This is not a group chat – it's private support sent directly to you.)