



St Stephen's
CE Primary School

John 13:34 'Love one another, as I have loved you'

NEWSLETTER

26: FRIDAY 27th MARCH 2026

Learning, loving and growing; together as God's children



A LOT CAN HAPPEN IN 7 DAYS

As we approach Holy Week, the most special time in our Church school year, we invite our families to take a moment to pause, reflect and consider the true meaning of Easter.

It is a precious opportunity for our school family to come together in thought, prayer and thankfulness.

We warmly invite you to join us for our KS2 Easter Service, led by our wonderful Year 5 pupils, on Thursday 2nd April at 2pm at St Stephen's Church.

Your presence makes these moments of worship and reflection even more meaningful for our children. We look forward to sharing this important time with you.

There are also details of local Church events over Easter on page 5.

thank
★ you ★

On Thursday our KS2 children were blown away watching the AWESOME Audacious Church bring the story of Holy Week to life. From the celebration of Palm Sunday, the sadness of Good Friday and the incredible joy of the Resurrection, the children experienced the power of the Easter story in such a real and memorable way. Thank you Audacious Church for helping our children see the hope, love and salvation at the heart of Easter!



JOIN THE LIBRARY I ♥ READING

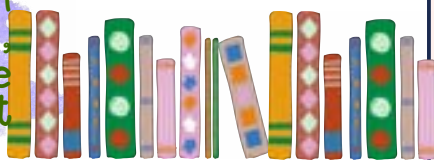
Part of the
National Year of Reading 2026

GO
ALL
IN.

Sarah will be joining us on Monday at Family Breakfast and will be able to sign up all families who want to sign up. Sarah will also be able to give more information about Borrowbox.



YOU'RE INVITED!



Family Breakfast

Page 4 has all the details!



2026							MARCH						
SUN	MON	TUE	WED	THU	FRI	SAT	SUN	MON	TUE	WED	THU	FRI	SAT
1	2	3	4	5	6	7							
8	9	10	11	12	13	14							
15	16	17	18	19	20	21							
22	23	24	25	26	27	28							
29	30	31											

STAY CONNECTED WITH US:

Phone: 0161 764 1132

Email: ststephens@thesycamoretrust.co.uk

Facebook: [St Stephen's CE Primary School, Bury.](#)

Website: www.ststephensceprimary.co.uk/



LOGIN

LOG INTO OUR
SCHOOL APPS:



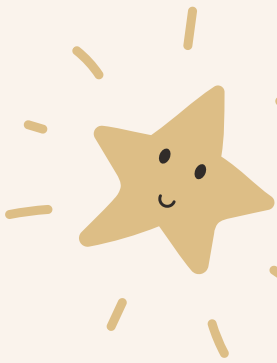
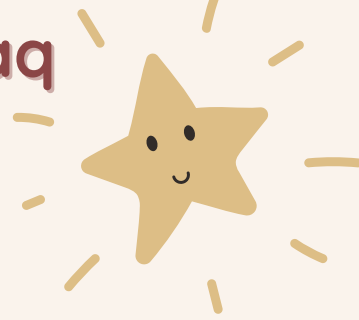
Arbor 94%
Parent Portal usage



School Money

OUR ST.STEPHEN'S SUPERSTARS:

EYFS Nataliyah and Asdaq
 YEAR 1 Favour
 YEAR 2 Yusuf Ju
 YEAR 3 Rhyan and Khloe
 YEAR 4 Alex and Skye
 YEAR 5 Kamran and Amelia
 YEAR 6 Aaba and Poppy



OUR CHARACTER SUPERSTARS:

EYFS	KEY STAGE 1	KEY STAGE 2
Rayyan - R	Karson-Gray - Y2	Afan - Y6

THIS WEEK'S ATTENDANCE and PUNCTUALITY:

<u>NURSERY</u>	91.1%	0 lates	<u>YEAR 3</u>	92.8%	0 lates
<u>RECEPTION</u>	99.2%	2 lates	<u>YEAR 4</u>	96.3%	1 late
<u>YEAR 1</u>	97.5%	1 late	<u>YEAR 5</u>	95.2%	1 late
<u>YEAR 2</u>	95.6%	1 late	<u>YEAR 6</u>	91.3%	0 lates

Number of lates this week: 6



Improvement from 8 last week!



Punctuality Champions: Nursery, Year 3 and Year 6

Attendance Heroes: RECEPTION



Appointments in term-time:

Appointments, where possible, should be booked in school holidays or after school. This includes routine dental and optician appointments.

Parent information, support and signposting

Keeping our children, and each other, safe is our number 1 priority at St Stephen's. Each week we will share key information we hope will be useful to our families.



[Link here to our school website for helpful information, links and downloads.](#)

If you ever have any questions, please do not hesitate to contact Mrs Denney (DSL), Mrs Garside or Mr Smith (DDSL)



St. Stephen's is an Emotionally Friendly Setting

Our EFS accreditation signifies that our school has implemented a whole-school approach to address emotional needs, including clear safeguarding and health and safety policies, demonstrating a strong focus on creating a safe and supportive learning environment for ALL. We are very proud to be the first primary in Bury to receive this!

Please see Padlet links below for further support:

[For children and young people](#)

[For parents and carers](#)

CLICK HERE



What Parents & Educators Need to Know about **TIKTOK**

13+

WHAT ARE THE RISKS?

AGE-INAPPROPRIATE CONTENT

BODY IMAGE AND DANGEROUS CHALLENGES

IN-APP SPENDING

CONTACT WITH STRANGERS

MISINFORMATION AND RADICALISATION

ADDICTIVE DESIGN

Advice for Parents & Educators

ENABLE FAMILY PAIRING

BLOCK IN-APP SPENDING

DISCUSS THE DANGERS

READ THE SIGNS

Meet Our Expert

#WakeUpWednesday

The National College

@wakeup_weds | www.thenationalcollege | @wakeup.wednesday | @wakeup.weds

TIK TOK

With approximately 220 million users under 18, TikTok is a social media titan among children and young people. But just because it's popular, doesn't mean it's free from risks. This guide and the episode of our #WakeUpWednesday podcast take a fresh look at these safety concerns and lets you know how to keep young TikTok users safe. [CLICK HERE](#)

AGE RESTRICTIONS ON MAIN UK SOCIAL MEDIA SITES	
	Facebook 13+
	Instagram 13+
	Snapchat 13+
	TikTok 13+
	YouTube 13+
	WhatsApp 16+



The Local Offer helps SEND families access information about the services that are available to them.



Save the Date

John 13:34 'Love one another, as I have loved you'

 St Stephen's
CE Primary School

 **YOU'RE INVITED!**

8.15am

Monday 30th March

Join us for a slice of toast and a hot/cold drink. We can't wait to see you!

 **Family Breakfast**

 **Parent Workshop**

9am

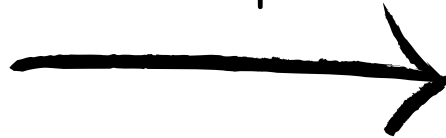
 **Supporting Your Child's Sleep**

In this session, we will:

- ★ Understand what sleep is and why it matters for children's learning, behaviour and wellbeing
- ★ Explore simple, effective strategies you can use at home to support your child's sleep routine

 Bury
Young People's
Mental Health
Support Team
Thrive in Education

We are delighted to be joined by Sarah from Bury Libraries Services as part of Our Year of Reading



Proud to support
The National Year
of Reading 2026.

Bury
Libraries

**GO
ALL
IN.**

Come and join us

KIDS £3 PER TICKET

Easter Extravaganza

You're invited to Audacious Church's Easter Celebrations

SAT 4TH APR | **START 2:30PM FINISH 5PM** | **CLARENCE PARK ROYAL AVENUE BL9 5AE**

audaciouschurch.com/easter

AUDACIOUS CHURCH

AUDACIOUS CHURCH

Bolton Road Methodist Services here



See page 6



Easter

KINGS Church

SATURDAY

EASTER Families Event

BOOK HERE

Saturday 4th April | 1-3pm

Easter

SUNDAY

Sunday, 05-Apr-2026
10:30am - 12:00pm
Kings Church Bolton,
Main Venue

BOOK HERE



ST STEPHEN'S CHURCH
HOLY WEEK
SERVICES



Sun 29th March

Palm Sunday service 9am

Mon 30th - Weds 1st

Compline 7pm

Maundy Thursday

service 7pm

Easter Vigil

Sat 4th 5pm

Easter Day service

Sun 5th 9am



Competition

“Why I Love the Place Where I Live”

The Mayor of Bury has launched a writing competition for Bury children to say why they love living here.

Run through Bury's library service, it's part of the National Year of Reading 2026, and is open to all young people who attend a primary school in the borough.

The theme of the competition is “Why I Love the Place Where I Live”, giving youngsters the chance to say - in no more than 200 words - what makes their home town so special.

Any subject about Bury is welcome, and the closing date for entries is **30th March 2026**

Pupils can drop off their entries at any library in the borough, email them to library.suggestions@bury.gov.uk or hand in to the school office (please include a parent name and telephone number on the back of all entries).

The winners will receive book tokens, and all entries will be published in a special book that will be available to borrow from Bury Libraries.

Sarah (Bury Library Service) will collect them at Family Breakfast on 30.03.2026

What's on the menu next week?

SCHOOL MENU

	MON	TUE	WED	THU	FRI
Main	Hot Chicken Tikka Panini	Pasta Carbonara	Roast Chicken Dinner With Gravy	Cottage Pie	Chicken Fajitas
	Hot Halal Chicken Tikka Panini	Halal Chicken Pasta Carbonara	Halal Roast Chicken Dinner With Gravy	Halal Cottage Pie	Halal Chicken Fajitas
	Hot Quorn Tikka Panini	Free Range Omelette & Cheese	Roast Quorn Fillet Dinner With Gravy	Pasta Arrabiata with Cherry Tomatoes	Breaded Fish Fingers
	Bean Jacket Potato	Cheese Jacket Potato	Tuna Jacket Potato	Bean Jacket Potato	Cheese Jacket Potato
	Cheese Sandwich	Tuna Sandwich	Ham Sandwich	Cheese Sandwich	Egg Sandwich
Accompaniments	Jacket Wedges Garlic Mayonnaise Sweetcorn	Spiced & Diced New Potatoes Fluted Carrots	Garlic Thyme Roast Potatoes Fresh Cauliflower Fresh Carrots	Steamed Mixed Vegetables Potato Salad	Oven Chips Garden Peas
Dessert	Apple & Cinnamon Flapjack Yeo Organic Fruit Yoghurt Fresh Fruit	Rice Pudding Yeo Organic Fruit Yoghurt Fresh Fruit Platter	Gingerbread Biscuit Yeo Organic Fruit Yoghurt Fresh Fruit	Wibble Strawberry Mousse Yeo Organic Fruit Yoghurt Fresh Fruit Platter	Raspberry Fruit Smoothie Pot Yeo Organic Fruit Yoghurt Fresh Fruit



THE YEAR OF READING AT ST. STEPHEN'S

PROUD TO SUPPORT THE NATIONAL YEAR OF READING



Great Books Guide
2025-26

[CLICK HERE](#)

[CHECK OUT](#)



DID YOU
KNOW?

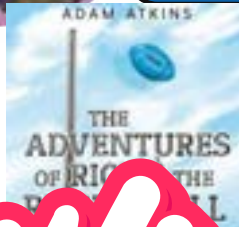


Mr Atkins, our amazing
Badminton coach -
is a published author!!

Throughout my life I have been passionate about sport of any kind. For over thirty years I have been coaching children, either through badminton or tennis and could see the positive influence sport had on their lives teaching them discipline, morals and life skills. This inspired me to write children's stories about different sports objects and the different adventures they go on. Hopefully these books will encourage more children to play and enjoy sports as I have.

GO
ALL
IN.

Wow!



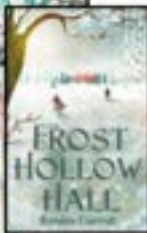
AUTHOR WORDS OF THE WEEK

Here we go again, with [@emmac2603](#) and [@vocabularyninja](#)

Emma Carroll

When I'm not writing books, I'm reading them. For many years I was an English teacher in a secondary school in Devon. Nowadays, I write full time. It's my absolute dream-come-true job! As a child, I wrote stories about ponies and pop stars, though not together. Today they call it fan-fiction; back then it was just weird.

After school, I worked as a reporter on a local newspaper. From there I went to university to study English Literature. After backpacking around the Middle East, South America, Australia, I did a PGCE in English and became a teacher.



crisp - a snack, or something dry and brittle.

conundrum - confusing situation or question.

[@VocabularyNinja](#)



'Words unlock the doors to a world of understanding...'



BURY HOLIDAY Activities & Food Programme



HAF SPRING 2026

Vouchers have been issued.

HAF is funded by The Department of Education to provide Food and Activities to families in receipt of benefits related Free School Meals.

Eligible families should now have received your email from Holiday Activities with a link to log in and redeem your voucher codes with 4 credits to book onto our fantastic Spring Holiday Activities programme.

If you are in receipt of benefits related free school meals but have not received your voucher email please contact school.

Our programme this Spring is bigger and better, with 31 providers in venues across the whole of the borough.

Activities Available include

- Forest Schools
- Football Camps
- Multisport Clubs, Martial Arts, Gym Sessions, Swimming
- Guided walks
- Drama and Theatre Workshops
- and so much more

SEND Provision is offered by a number of Providers. With SEND Specific Places provided by Bee Inclusive and Funtime

A full list of Providers, dates and time, and the level of need they are equipped to provide activities for can be found on the Bury HAF Webpage.

Find activities



Scan the QR code to find and book activities



bury.gov.uk/bury-haf



**FREE HAF activities on offer
this Half Term for eligible
families**

**BOOK
NOW**



funtime Sports Camp

For Ages 4 - 12 years!

Teens aged 13-16 can get involved in our Young Leaders Programme!

- **Week 1: Tuesday 7th - Friday 10th April**
- **Week 2: Monday 13th - Friday 17th April**

✓ **RADCLIFFE - Weeks 1 & 2**

- **The Funtime Activity Centre**
- Unit 10 Ainsworth Mill, Radcliffe BL2 6QE
- Full Day Sports Camp: 8.30am-5.30pm
- Bury HAF & Activity Day: 9.30am-3.30pm

✓ **WHITEFIELD - Week 1 only**

- **St Michaels Primary School**
- Ribble Drive, M45 8NJ
- Bury HAF & Activity Day: 9.30am-3.30pm

✓ **SENSORY - Weeks 1 & 2**

- **The Funtime Activity Centre**
- **Sessions are specific to children who have more complex needs and who currently receive 1-2-1 support in school**
- Unit 10 Ainsworth Mill, Radcliffe BL2 6QE
- Morning sessions: 10.15am - 12.15pm
- Afternoon sessions: 2.00pm - 4.00pm
- Please check bookings for exact times

! **Go All Inclusive...**
Breakfast - Hot & Cold Lunches and Dinners - Snacks - Drinks all included!

! **HAF Vouchers...**
Use your HAF vouchers at any of our camps!



From **£24** Per day



Book Online



www.funtimeactivities.co.uk
or email us at info@funtimeactivities.co.uk



DON'T

MISS OUT!

YOU are in the spotlight:

Billy

Reception

Kindness

spotlight

CHOOSE kindness

Niamh

Y3

Favourite food: Peppers
 Favourite film/programme: PJ Masks
 Favourite subject: Phonics
 What is the best thing about St Stephen's? Getting certificates
 What would make St Stephen's better? More celebrations - maybe chocolate?!
 What is your greatest achievement in school? Getting a certificate in assembly
 What is your greatest achievement out of school? My swimming
 Anything else? No

Your kindness makes our school shine!

Wellbeing WISDOM from the warriors:

“
TAKE NOTICE
 Try mindful colouring or drawing.
 ”

you are
 A·M·A·Z·I·N·G

WINNING WAYS TO WELLBEING

If you need support with your wellbeing, speak to one of our Wellbeing Warriors, Mrs Cooney or Katie. YOU matter!

CONNECT
 TALK & LISTEN, BE THERE, FEEL CONNECTED

Give
 Your time, your words, your presence

TAKE NOTICE
 REMEMBER THE SIMPLE THINGS THAT GIVE YOU JOY

KEEP LEARNING
 EMBRACE NEW EXPERIENCES, SEE OPPORTUNITIES, SURPRISE YOURSELF!

BE ACTIVE
 DO WHAT YOU CAN, ENJOY WHAT YOU DO, MOVE YOUR MOOD



INTRODUCE THESE FIVE SIMPLE STRATEGIES INTO YOUR LIFE AND YOU WILL FEEL THE BENEFITS.

NHS 5 ways to wellbeing.



Reflection of the week:

MAKE THE RIGHT FRIENDS

A friend loves you all the time.

Proverbs 17:17

KID TIP

You simply cannot please everybody. So here's what you should do: Try pleasing God and your parents.

Wellbeing Club with Katie every:

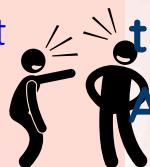
MONDAY

12.30-1.00pm in HUB Connect

Joke of the week: A PRAYER FOR TODAY

Q: Why is it difficult to tell twin witches apart?

A: Because you don't know which witch is which!



Dear Lord, help me remember that I don't have to please everybody ... but that I should always try to please You!
 Amen.

Bury

Young People's
Mental Health
Support Team
Thrive in Education

Hello, my name is Katie



NHS

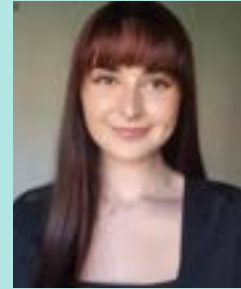
Pennine Care
NHS Foundation Trust

Who are Bury Mental Health Support Team (MHST)?

We are a service who works with Bury schools and colleges to support children and young people who struggle with their mental health.

Our goals are:

- To work with children, young people or parents on their own or in a group.
- To work with teachers to make school an emotionally friendly place for all.
- To give advice to school staff to help children and young people get the right support.



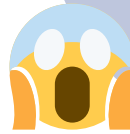
I'm an Education Mental Health Practitioner



How can I help?

I am trained to help children and young people, who may start to struggle with emotions such as;

Worry, sadness or fear



My allocated day with your school is:

MONDAY

From 3rd

November 2025

I work all year round so, i can support you during the school holidays.

How to ask for help?

If you are struggling with your emotions, please speak to;

- Your teacher
- Mrs Denney
- Mrs Cooney
- Parents/Carers
- Any trusted adult



What do I do?

- Work closely with school staff to help make school a happy and emotionally friendly place for everyone.
- Deliver workshops and teaching for school staff, pupils and parents.
- Offer advice about other services that are available within Bury so that you get the right support.



A bit about me:

Some fun facts about me:

- I really enjoy reading
- My favourite animal is a Lion
- I don't like spiders!



I look forward to working within your school and meeting you all.

Katie is in school every
MONDAY

In partnership with:

& Early Break



For the year's overview, please view school calendar

Event	Date
Celebration Worship	Friday 3pm
Family Breakfast (8:15am)/PARENT WORKSHOP (9am)	Monday 30th March
Mayor of Bury Competition Deadline	Monday 30th March
Y6 Crucial Crew	Wednesday 1st April
Year 5 Easter Service - Parents attending the service can collect their child from Church	Thursday 2nd April at 2:00pm
Easter Holidays	Friday 3rd - Friday 17th April
Y4 Viking & Anglo-Saxon workshop (in school)	Thursday 23rd April
Bank Holiday - school closed to pupils	Monday 4th May
Local Elections - school closed to pupils	Thursday 7th May
Y6 KS2 SATs	Monday 11th - Thursday 14th May
Break the Rules Day	Friday 15th May
May half-term	Monday 25 May - Friday 29th May
Y6 Bikeability	Monday 1st - Friday 5th June
Class Photographs	Monday 8th June
Y6 Residential	Wednesday 10th - Friday 12th June
Y6 Swimming - everyday for 10 days	Monday 15th - Friday 26th June
The Sycamore Trust Concert at Bury Parish Church	Tuesday 30th June